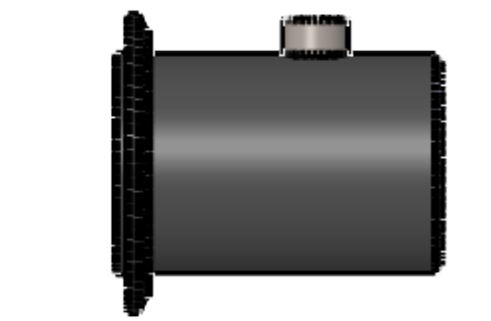
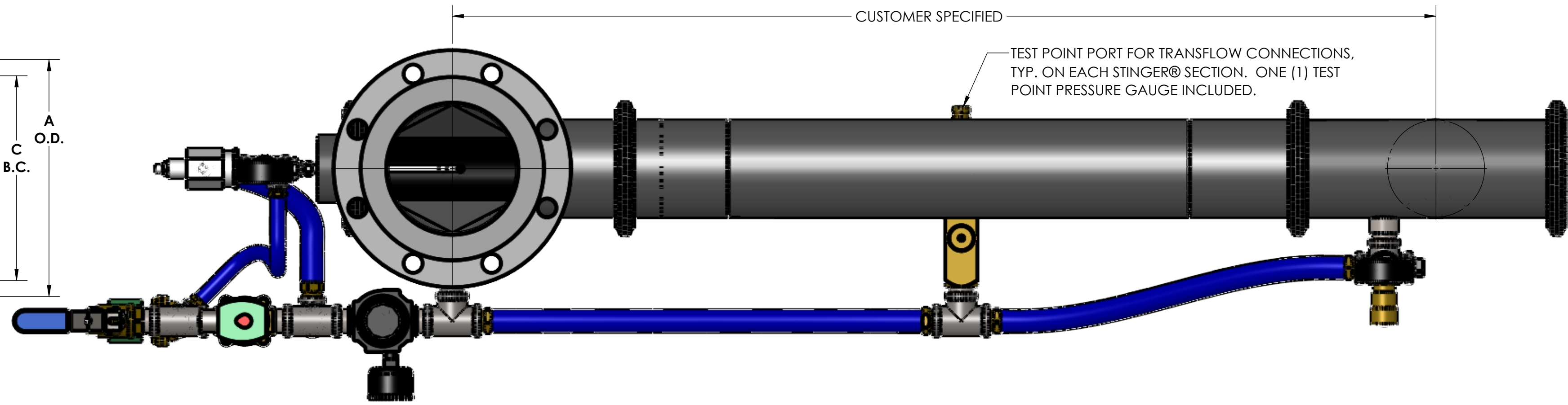
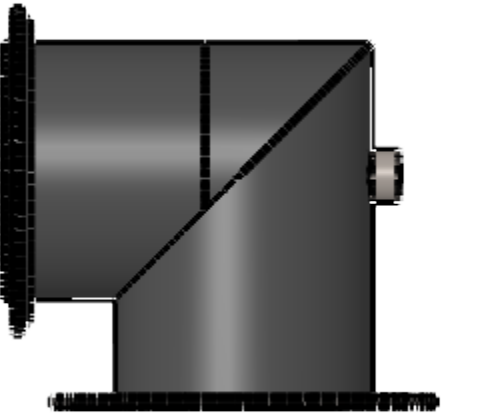


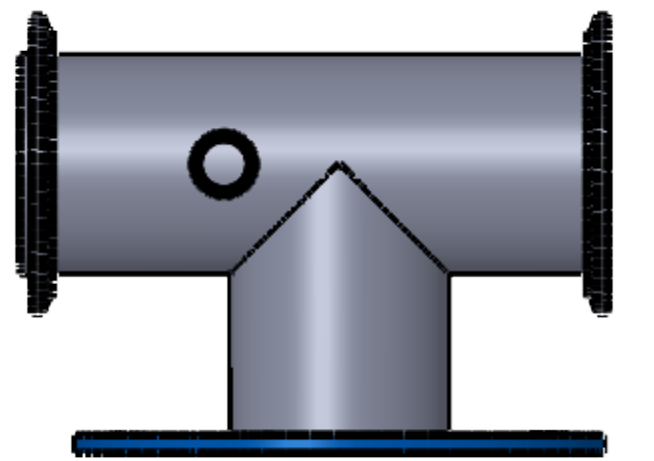
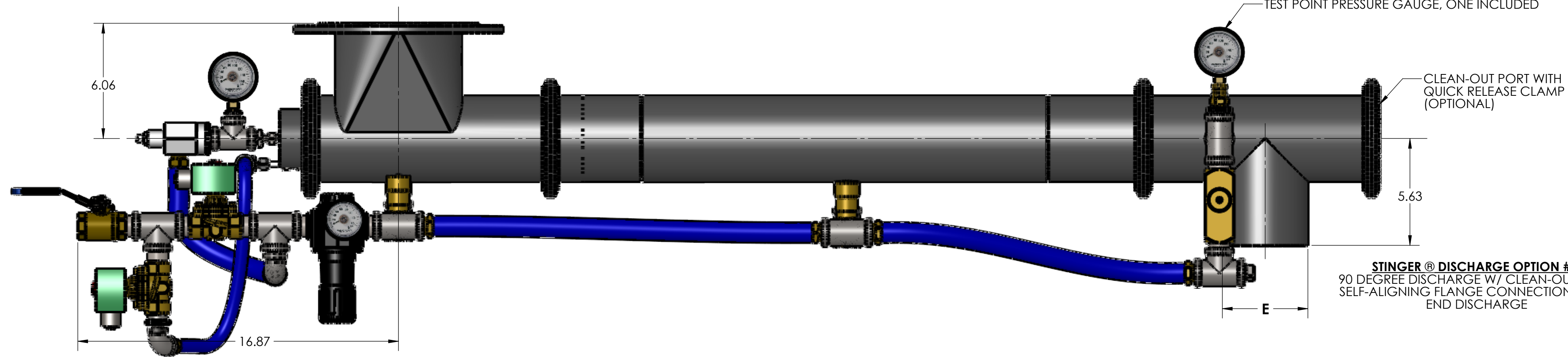
INLET FLANGE DETAIL
150# ANSI DRILLING



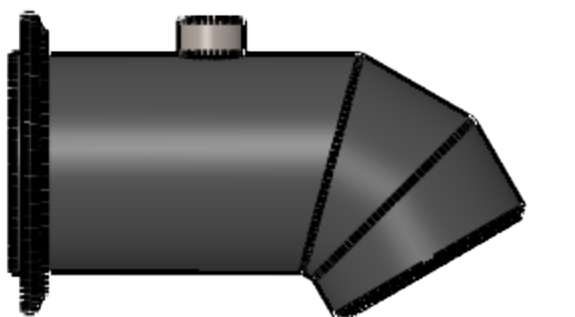
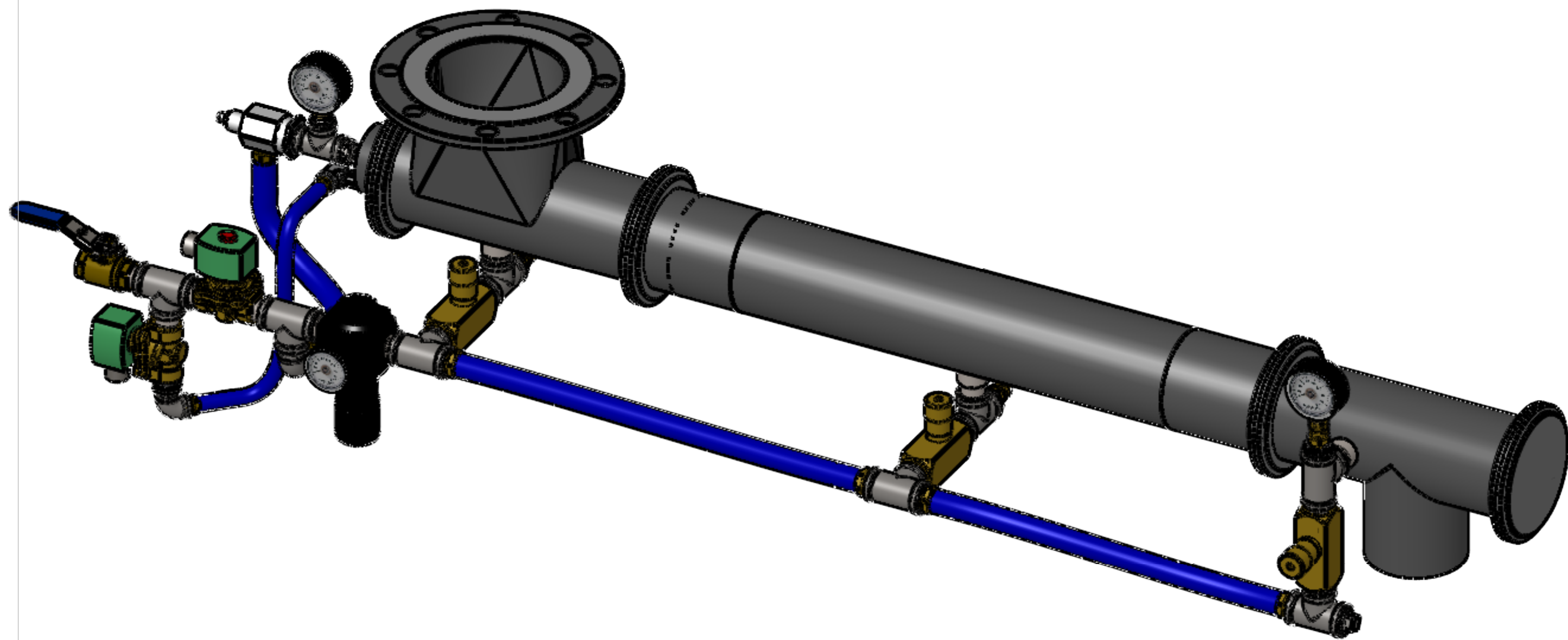
STINGER® DISCHARGE OPTION # 2
STRAIGHT DISCHARGE END
& SELF-ALIGNING FLANGE CONNECTION
(SEE NOTE NO. 6)



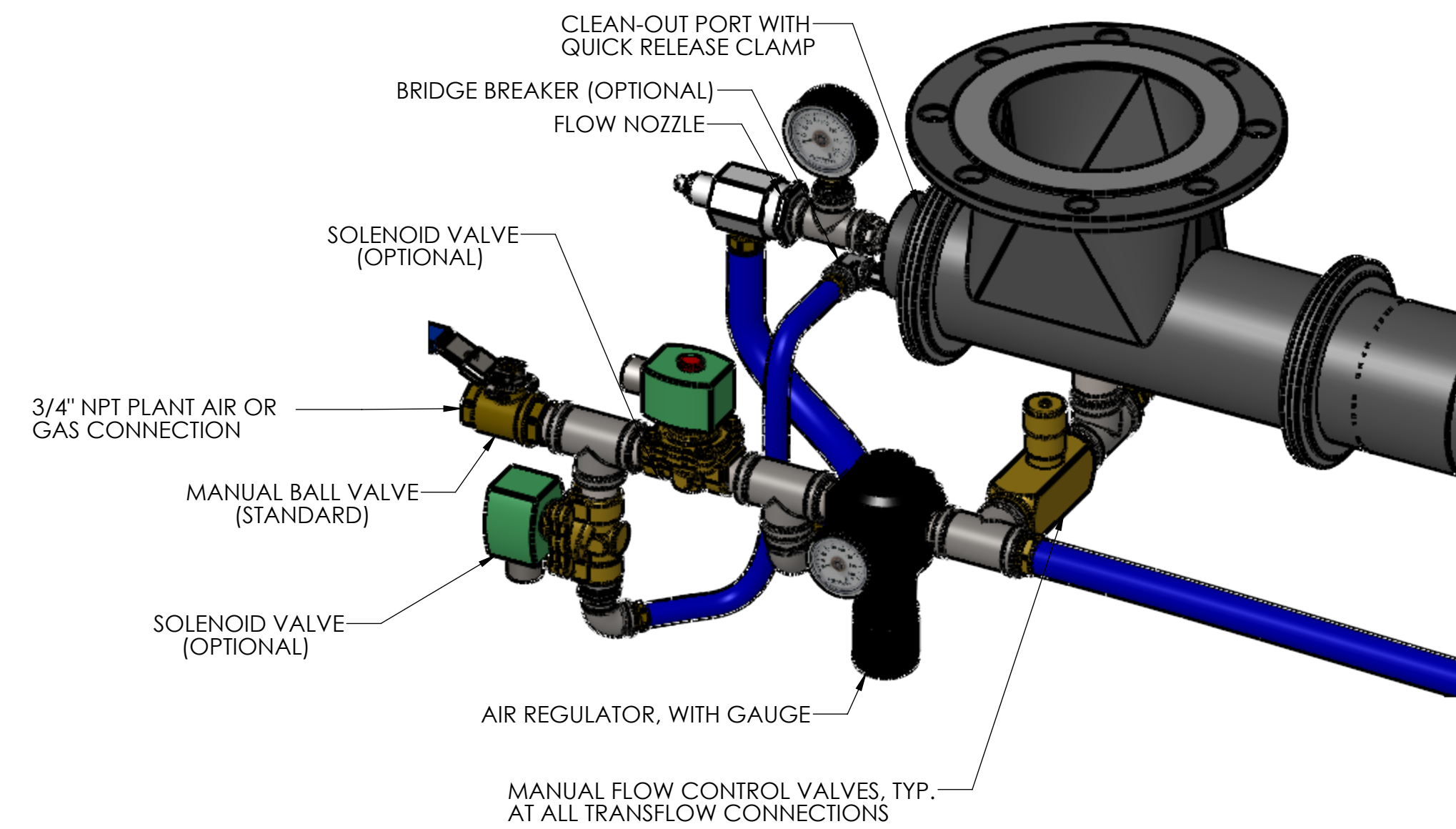
STINGER® DISCHARGE OPTION # 3
90 DEGREE ELBOW W/ SELF-ALIGNING
FLANGE CONNECTION
(SEE NOTE NO. 6)



STINGER® DISCHARGE OPTION # 4
90 DEGREE DISCHARGE W/ CLEAN-OUT PORT,
SELF-ALIGNING FLANGE CONNECTION,
FLANGED DISCHARGE



STINGER® DISCHARGE OPTION # 5
45 OR 60 DEGREE ELBOW, W/
SELF-ALIGNING FLANGE CONNECTION
(SEE NOTE NO. 6)



Stinger® Size & Model Number	Conveying Capacity Range (SEE NOTE # 4)	A	B	C	D	E
STR 4 x 1.5	Up to 3,200 lbs./hr. (1600 kg/hr)	9.00	4.75	7.50	0.75	2.88
STR 4 x 2	Up to 6,000 lbs./hr. (2700 kg/hr)	9.00	4.75	7.50	0.75	3.50
STR 6 x 3	Up to 15,000 lbs./hr. (6800 kg/hr)	11.00	6.88	9.50	0.88	4.50
STR 6 x 4	Up to 25,000 lbs./hr. (11200 kg/hr)	11.00	6.88	9.50	0.88	5.56
STR 8 x 5	Up to 40,000 lbs./hr. (18181 kg/hr)	13.50	8.88	11.75	0.88	6.63
STR 8 x 6	Up to 60,000 lbs./hr. (27300 kg/hr)	13.50	8.88	11.75	0.88	8.63

Note: Stinger® sizes above are standard. Custom sizes and designs are available upon request.

NOTES:

1. STINGER HOUSINGS ARE FABRICATED OF CARBON STEEL OR STAINLESS STEEL.
2. BRIDGE BREAKER IS OPTIONAL AND WILL BE FURNISHED ONLY WHEN SPECIFIED.
3. AVERAGE PLANT AIR OR GAS REQUIRES 80 PSIG. TRANSFLOW REQUIRES 15-25 CFM AT 5-9 PSIG (11 PSIG MAX). EXACT PLANT AIR REQUIREMENT IS MATERIAL DEPENDENT.
4. CONVEYING CAPACITIES SHOWN ARE CONSERVATIVE RANGES AND ARE BASED ON 45 LBS./CU. FT. MATERIAL. ACTUAL CONVEYING CAPACITIES ARE MATERIAL DEPENDENT.
5. SOLENOID VALVES ARE OPTIONAL AND WILL BE FURNISHED ONLY WHEN SPECIFIED.
6. STINGER DISCHARGE CAN BE SUPPLIED WITH FLANGED CONNECTION HAVING 150# ANSI DRILLING OR PLAIN END. CUSTOMER SPECIFIED.

GENERAL TOLERANCES	
UNLESS OTHERWISE SPECIFIED THE FOLLOWING SHALL APPLY	
MACHINING - .XX= .02 .XXX= .005 ANGLE= .50°	
SURFACE ROUGHNESS HEIGHT 63 MICRONS OR LESS	
FABRICATION - UNDER 6" 6 TO 24" 24 TO 60" OVER 60"	
± .06 ± .12 ± .19 ± .25	
UNLESS OTHERWISE SPECIFIED DIMENSIONS ARE IN INCHES	

REVISIONS			
02	REVISED AIR PLUMBING	11/05/21	JPR
01	UPDATED TO NEW BRIDGE BREAKER DESIGN & TEST POINT LOCATION	7/13/18	BMF
REV. NO.	DESCRIPTION	DATE	BY
CUSTOMER			
CUST. NO.			
YOUNG ORDER NO.			
TITLE			
YOUNG INDUSTRIES STINGER® CONVEYOR, HORIZONTAL UNIT			

THE YOUNG INDUSTRIES, INC.
MINICY, PENNSYLVANIA 17756
TELEPHONE: 970-546-3165

DRAWN BY: **BMF** DATE DRAWN: **05/11/16**
CHECKED BY: SCALE=1:4
DRAWING NUMBER: **D-20964-00** SHEET 1 OF 1 REV: 00