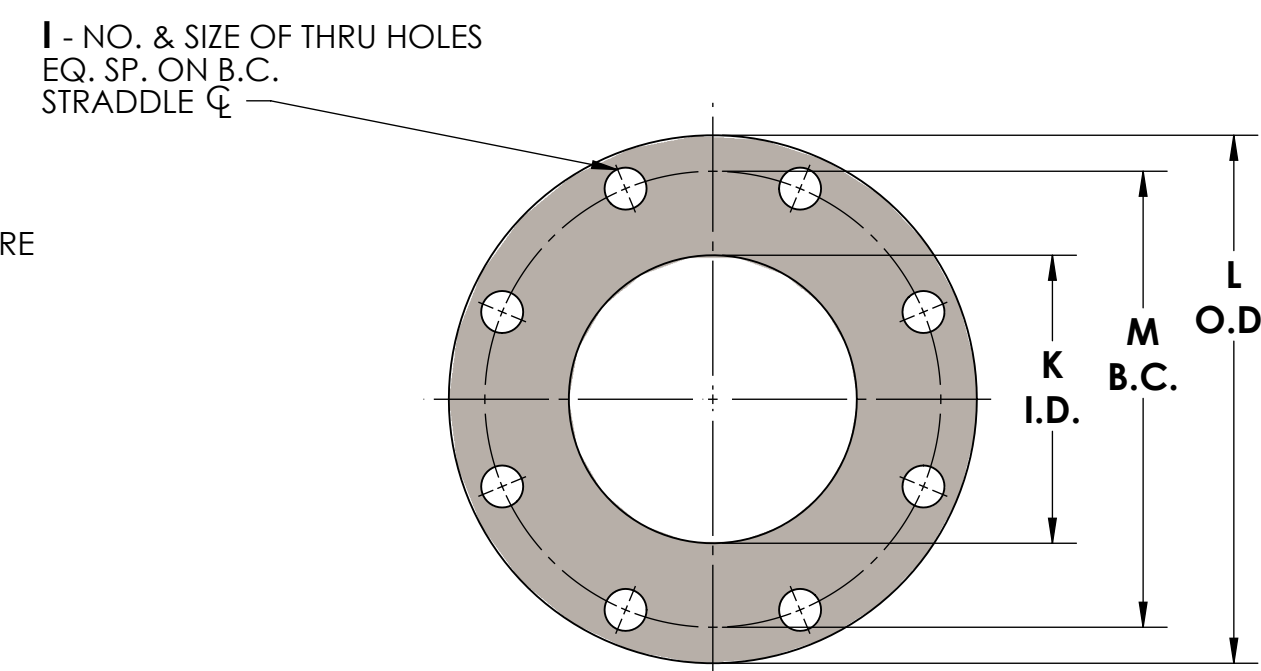
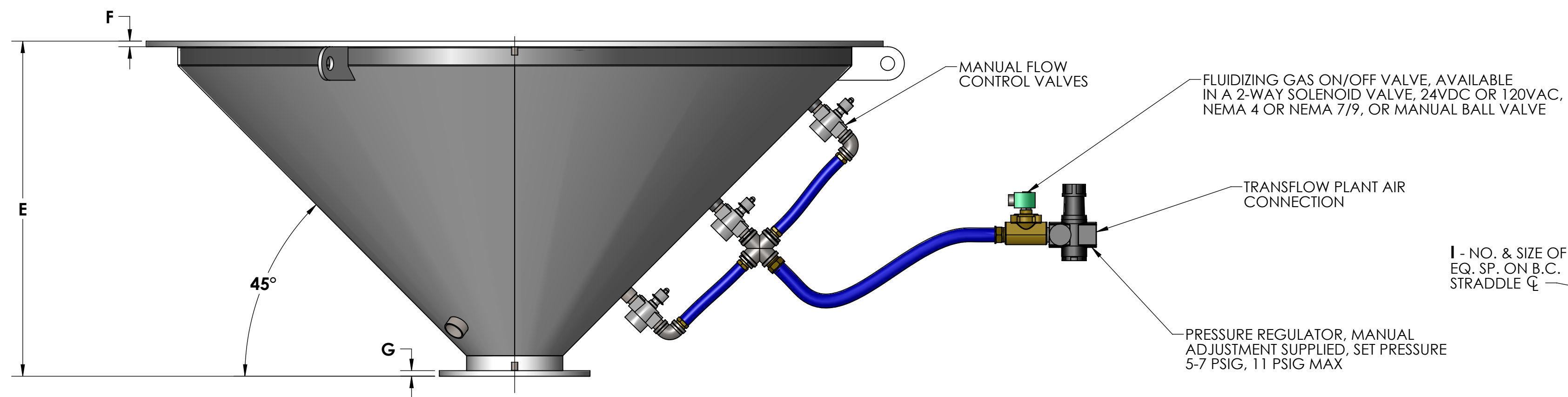
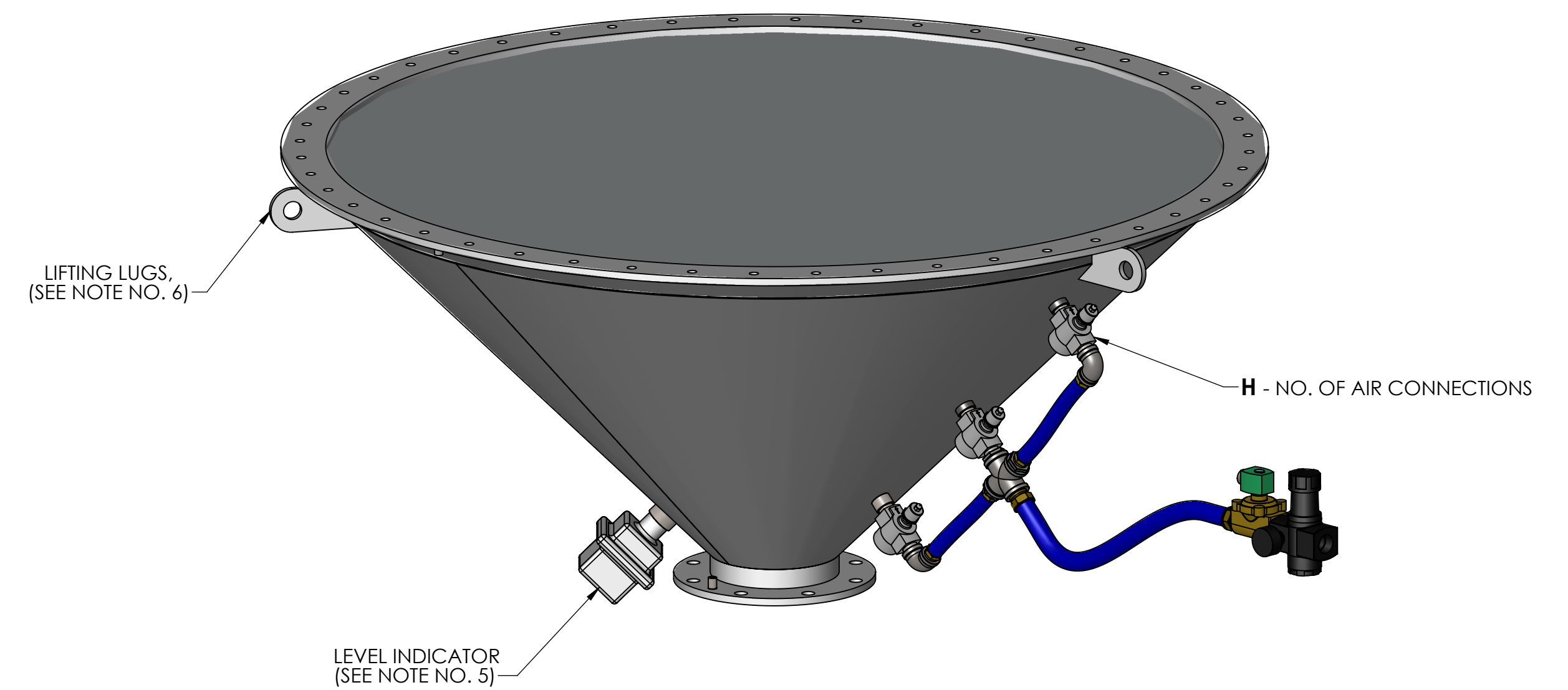


NOTES:

- BIN DISCHARGERS ARE AVAILABLE IN CARBON STEEL AND STAINLESS STEEL. OTHER MATERIALS ARE AVAILABLE UPON REQUEST.
- TRANSFLOW FLUIDIZATION MEDIA IS CONSTRUCTED OF 316 STAINLESS STEEL.
- GASKET MATERIAL: NEOPRENE (STANDARD) OR OTHER MATERIALS AVAILABLE BY REQUEST.
- PAINT SPECIFICATION: YOUNG INDUSTRIES STANDARD 082.502 Y.I. EPOXY OR CUSTOMER SPECIFIED. STAINLESS STEEL IS NOT PAINTED.
- LEVEL INDICATORS ARE OPTIONAL AND WILL ONLY BE FURNISH WHEN SPECIFIED.
- LIFTING LUGS ARE OPTIONAL AND WILL ONLY BE FURNISH WHEN SPECIFIED.
- MATERIAL FINISH:
C/S PLATE / SHEET FINISH - HOT ROLLED
S/S SHEET FINISH - NO. 2B
S/S PLATE FINISH - H.R.A.P.
- CUSTOM HEIGHTS, CONE ANGLES, FLANGE DIMENSIONS ARE AVAILABLE BY REQUEST



| A | B | C | D | E | F | G | H | I | J | K | L | M | APPROX. REQ. CFM* |
|-------|-------|-------|----------|-------|------|------|---|---------|----|------|-------|-------|-------------------|
| 18.00 | 20.25 | 22.00 | (12) .50 | 10.50 | 0.50 | 0.38 | 1 | (8) .75 | 4" | 4.00 | 9.00 | 7.50 | 5-10 |
| 24.00 | 26.25 | 28.00 | (16) .50 | 12.50 | 0.50 | 0.38 | 1 | (8) .88 | 6" | 6.00 | 11.00 | 9.50 | 5-10 |
| 36.00 | 39.50 | 42.00 | (24) .62 | 18.50 | 0.50 | 0.38 | 2 | (8) .88 | 6" | 6.00 | 11.00 | 9.50 | 15-20 |
| 48.00 | 51.50 | 54.00 | (36) .62 | 24.00 | 0.50 | 0.50 | 2 | (8) .88 | 8" | 8.00 | 13.50 | 11.75 | 30-40 |
| 60.00 | 63.50 | 66.00 | (36) .62 | 30.00 | 0.50 | 0.50 | 3 | (8) .88 | 8" | 8.00 | 13.50 | 11.75 | 50-60 |
| 72.00 | 75.50 | 78.00 | (48) .62 | 36.00 | 0.50 | 0.50 | 3 | (8) .88 | 8" | 8.00 | 13.50 | 11.75 | 75-90 |

*CFM REQUIREMENT IS BASED ON 5-7 PSIG SUPPLY, 11 PSIG MAX, RANGE MAY VARY BASED ON MATERIAL CHARACTERISTICS

| REV. NO. | DESCRIPTION | DATE | BY |
|---|-------------|----------------|----|
| REVISIONS | | | |
| CUSTOMER: | | | |
| CUSTOMER PO NUMBER: | | | |
| YOUNG JOB NUMBER: | | | |
| TITLE | | | |
| YOUNG INDUSTRIES 45 DEGREE BIN DISCHARGER | | | |
| | | | |
| DRAWN BY: BWY | | DATE: 07/29/24 | |
| CHECKED BY: | | SCALE=1:8 | |
| DRAWING NUMBER | | SHEET | |
| D-21404-13 | | 1 OF 1 | |
| | | REV: 00 | |

| GENERAL TOLERANCES UNLESS OTHERWISE SPECIFIED THE FOLLOWING SHALL APPLY | | | |
|--|----------------------------|---------|-------------|
| MACHINING | ±.02 | ±.005 | ANGLES: 30° |
| SURFACE ROUGHNESS | HEIGHT: 63 MICRONS OR LESS | | |
| FABRICATION | UNDER 6 | 6 TO 24 | 24 TO 60 |
| | ±.06 | ±.12 | ±.19 |
| | | | ±.25 |
| UNLESS OTHERWISE SPECIFIED DIMENSIONS ARE IN INCHES. UNLESS SPECIFIED DIMENSIONS & TOLERANCES INTERPRETED PER ASME Y14.5-2009 | | | |
| 3RD | | | |