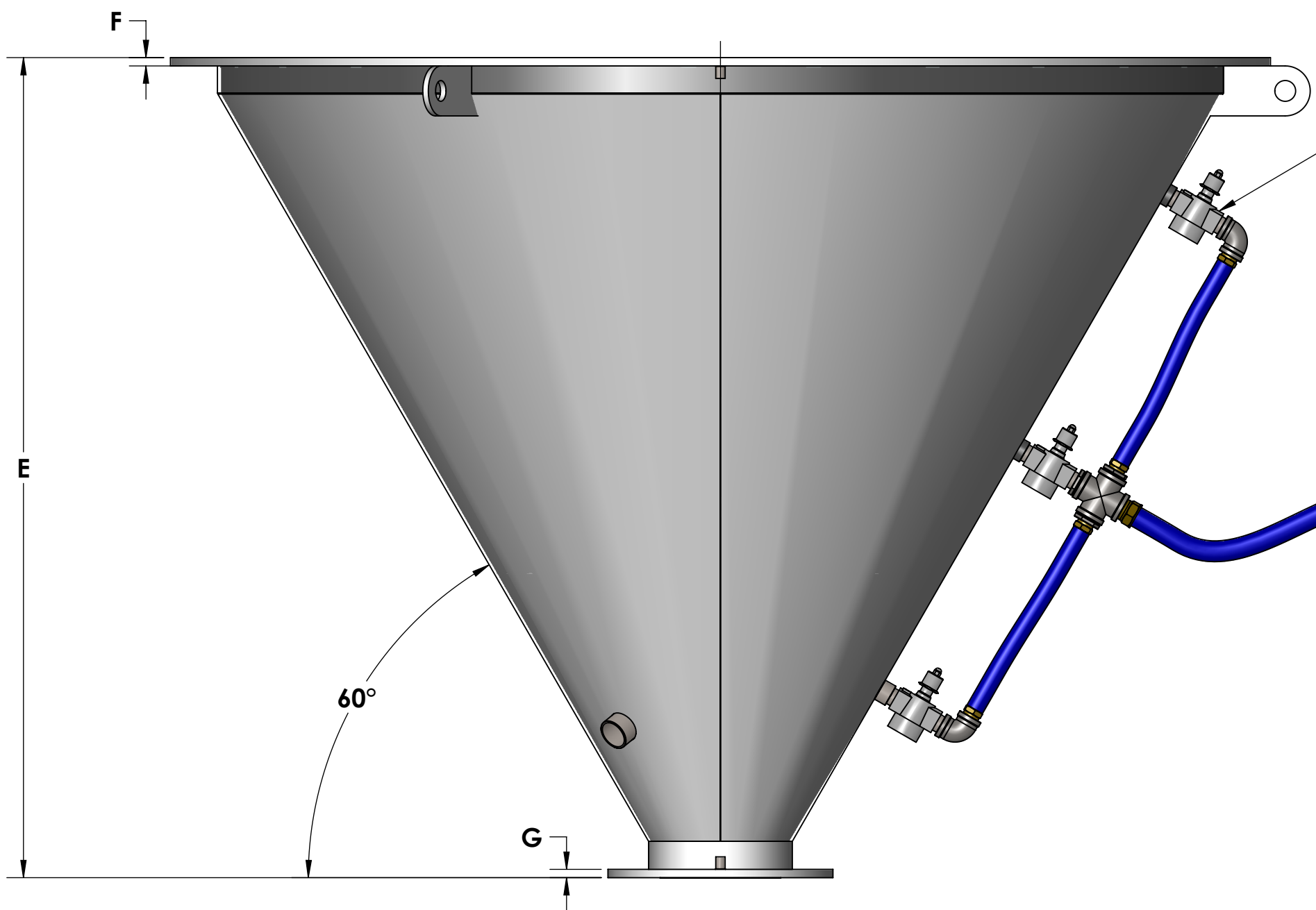


D- NO. & SIZE OF THRU HOLES
EQ. SP. ON B.C.
STRADDLE G



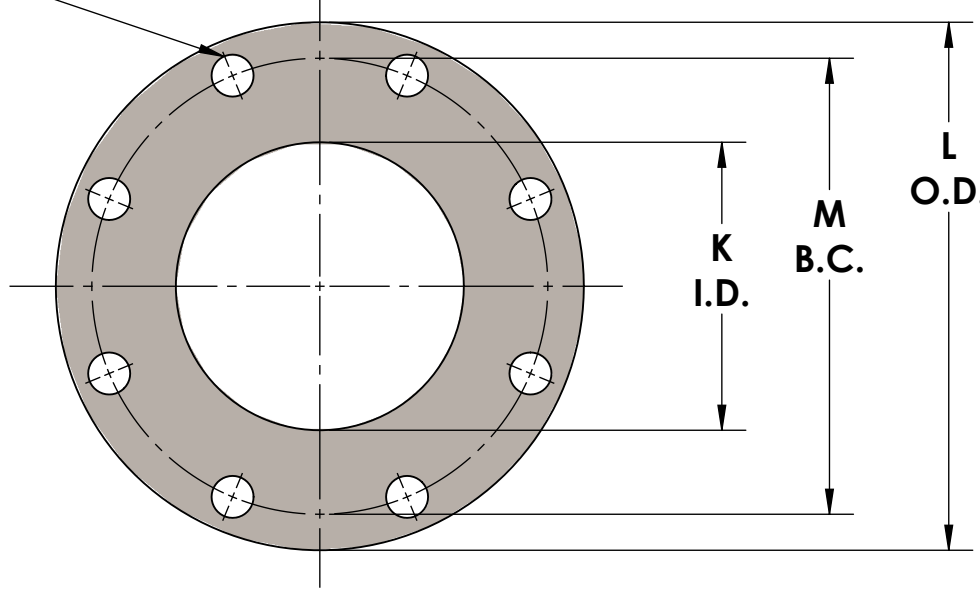
MANUAL FLOW CONTROL VALVES

FLUIDIZING GAS ON/OFF VALVE, AVAILABLE
IN A 2-WAY SOLENOID VALVE, 24VDC OR 120VAC,
NEMA 4 OR NEMA 7/9, OR MANUAL BALL VALVE

TRANSFLOW PLANT AIR CONNECTION

PRESSURE REGULATOR, MANUAL
ADJUSTMENT SUPPLIED, SET
PRESSURE 5-7 PSIG, 11 PSIG MAX

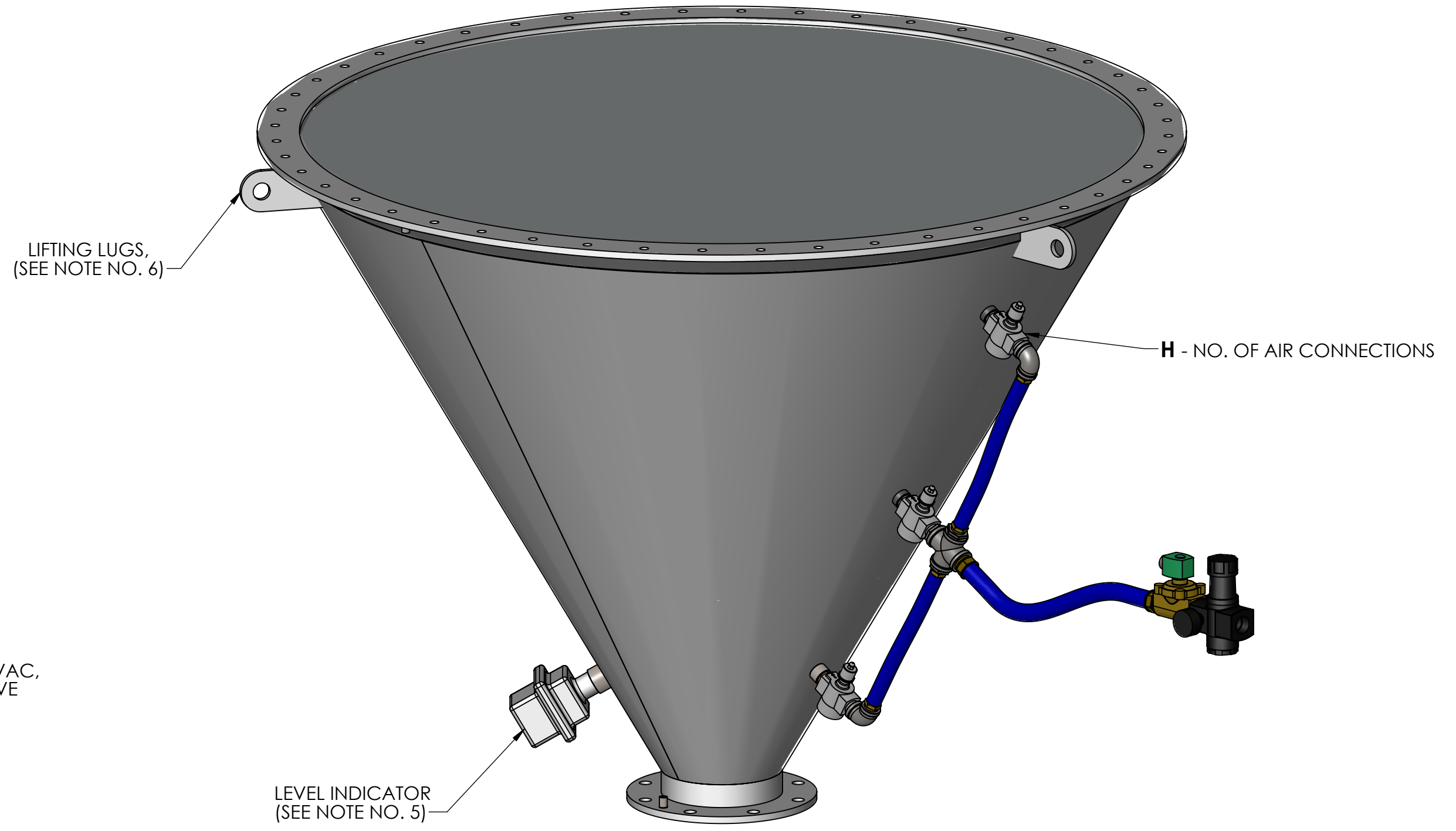
I - NO. & SIZE OF THRU HOLES
EQ. SP. ON B.C.
STRADDLE G



DISCHARGE FLANGE DETAIL
(J - NOMINAL FLANGE SIZE)

NOTES:

- BIN DISCHARGERS ARE AVAILABLE IN CARBON STEEL AND STAINLESS STEEL. OTHER MATERIALS ARE AVAILABLE UPON REQUEST.
- TRANSFLOW FLUIDIZATION MEDIA IS CONSTRUCTED OF 316 STAINLESS STEEL.
- GASKET MATERIAL: NEOPRENE (STANDARD) OR OTHER MATERIALS AVAILABLE BY REQUEST.
- PAIN SPECIFICATION: YOUNG INDUSTRIES STANDARD 082.502 Y.I. EPOXY OR CUSTOMER SPECIFIED. STAINLESS STEEL IS NOT PAINTED.
- LEVEL INDICATORS ARE OPTIONAL AND WILL ONLY BE FURNISH WHEN SPECIFIED.
- LIFTING LUGS ARE OPTIONAL AND WILL ONLY BE FURNISH WHEN SPECIFIED.
- MATERIAL FINISH:
C/S PLATE / SHEET FINISH - HOT ROLLED
S/S SHEET FINISH - NO. 2B
S/S PLATE FINISH - H.R.A.P.
- CUSTOM HEIGHTS, CONE ANGLES, FLANGE DIMENSIONS ARE AVAILABLE BY REQUEST



| A | B | C | D | E | F | G | H | I | J | K | L | M | APPROX. REQ. CFM* |
|-------|-------|-------|----------|-------|------|------|---|---------|----|------|-------|-------|-------------------|
| 18.00 | 20.25 | 22.00 | (12) .50 | 16.00 | 0.50 | 0.38 | 1 | (8) .75 | 4" | 4.00 | 9.00 | 7.50 | 5-10 |
| 24.00 | 26.25 | 28.00 | (16) .50 | 19.50 | 0.50 | 0.38 | 1 | (8) .88 | 6" | 6.00 | 11.00 | 9.50 | 10-15 |
| 36.00 | 39.50 | 42.00 | (24) .62 | 30.00 | 0.50 | 0.38 | 2 | (8) .88 | 6" | 6.00 | 11.00 | 9.50 | 25-30 |
| 48.00 | 51.50 | 54.00 | (36) .62 | 38.75 | 0.50 | 0.50 | 2 | (8) .88 | 8" | 8.00 | 13.50 | 11.75 | 40-50 |
| 60.00 | 63.50 | 66.00 | (36) .62 | 49.25 | 0.50 | 0.50 | 3 | (8) .88 | 8" | 8.00 | 13.50 | 11.75 | 65-80 |
| 72.00 | 75.50 | 78.00 | (48) .62 | 60.00 | 0.50 | 0.50 | 3 | (8) .88 | 8" | 8.00 | 13.50 | 11.75 | 100-120 |

*CFM REQUIREMENT IS BASED ON 5-7 PSIG SUPPLY, 11 PSIG MAX, RANGE MAY VARY BASED ON MATERIAL CHARACTERISTICS

| REV. NO. | DESCRIPTION | DATE | BY |
|---|-------------|------|----|
| REVISIONS | | | |
| CUSTOMER: | | | |
| CUSTOMER PO NUMBER: | | | |
| YOUNG JOB NUMBER: | | | |
| TITLE | | | |
| YOUNG INDUSTRIES 60 DEGREE BIN DISCHARGER | | | |

MUNICIPALITY, PENNSYLVANIA 17756
TELEPHONE: 570-546-3165

| | |
|----------------------------|----------------|
| DRAWN BY: BWY | DATE: 07/29/24 |
| CHECKED BY: | SCALE=1:8 |
| DRAWING NUMBER: D-21404-14 | SHEET 1 OF 1 |
| REV: 00 | |

| GENERAL TOLERANCES | |
|--|-------------------|
| UNLESS OTHERWISE SPECIFIED THE FOLLOWING SHALL APPLY | |
| MACHINING - XX= .02 XXX= .005 | ANGLES - 30° |
| SURFACE ROUGHNESS HEIGHT 63 MICRONS INCHES OR LESS | |
| FABRICATION - UNDER 6 | 6 TO 24 |
| 24 TO 60 | OVER 60 |
| ± .06 | ± .12 ± .19 ± .25 |

UNLESS OTHERWISE SPECIFIED DIMENSIONS ARE IN INCHES.
UNLESS SPECIFIED DIMENSIONS & TOLERANCES INTERPRETED PER ASME Y14.5-2009

3RD