

NOTES:

STANDARD MATERIALS OF CONSTRUCTION:

HOUSING

STANDARD MATERIAL OF CONSTRUCTION: 304 S/S WITH 316 S/S FLUIDIZING MEDIA

AUGER

- OPTION 1: HDPE FLIGHTING WITH 304 STAINLESS STEEL HEX SHAFT
- OPTION 2: MACHINED OR FABRICATED 303 S/S
- OPTION 3: MACHINED OR FABRICATED 316 S/S
- OPTION 4: MACHINED OR FABRICATED CARBON STEEL

MOTOR/DRIVE (PER ORDER REQUIREMENTS)

AVAILABLE OPTIONS INCLUDE:

- OPTION 1: TENV, VECTOR DUTY FOR 1000:1 TURNDOWN, 3PH/230V/480V/3PH, GENERAL PURPOSE AREA
- OPTION 2: TENV, VECTOR DUTY FOR 1000:1 TURNDOWN, 3PH/230V/480V/3PH, NEMA 7/9 FOR EXPLOSION HAZARDOUS AREAS
- OPTION 3: CUSTOM MOTOR AND/OR REDUCER, PER ORDER

DRIVE NOTES:

* STANDARD DRIVE INCLUDES NORD SK SERIES HELICAL BEVEL REDUCER WITH HOLLOW-BORE, KEYLESS SHRINK-DISK SHAFT FOR EASY AUGER REMOVAL. CAST ALUMINUM CONSTRUCTION AND WASHDOWN DUTY IS STANDARD.

FEEDING APPLICATIONS:

- VOLUMETRIC FEEDING
- GRAVIMETRIC BATCH FEEDING (WHEN INSTALLED IN STS-2 FEEDER PACKAGE)
- GRAVIMETRIC CONTINUOUS FEEDING (WHEN INSTALLED IN STS-2 FEEDER PACKAGE)

CUSTOM ORDERS

- CUSTOM DESIGNS WITH FEATURES AND DIMENSION OTHER THAN THOSE SPECIFIED ARE AVAILABLE. CONTACT YOUNG INDUSTRIES OR YOUR LOCAL YOUNG INDUSTRIES REPRESENTATIVE FOR MORE INFORMATION

CONTROLS:

CONTROLS ARE DEPENDANT ON APPLICATION. ALL DoS-WEIGH FEEDERS ARE DESIGNED TO WORK WITH OUR FAMILY OF YOUNG INDUSTRIES TOUCHSTONE CONTROLS. CONFIGURATIONS INCLUDE VOLUMETRIC OPERATIONS, GRAVIMETRIC BATCHING, OR CONTINUOUS GRAVIMETRIC FEED

COMPRESSED GAS

FLUIDIZING MEDIA REQUIRES COMPRESSED AIR OR ALTERNATIVE GAS SUCH AS NITROGEN TO OPERATE. MINIMUM SUPPLY PRESSURE IS 60 PSI AND GAS MUST BE FILTERED TO 1/2 MICRON OR BELOW WITH A DEWPOINT OF -20°F OR BETTER

PLAIN TUBE DISCHARGE OPTION

PLAIN DISCHARGE IS TYPICALLY USED FOR VOLUMETRIC OR RATE FEED APPLICATIONS WHERE FEEDER RUNS CONTINUOUSLY AND DISCHARGE NEVER NEEDS TO BE BLOCKED

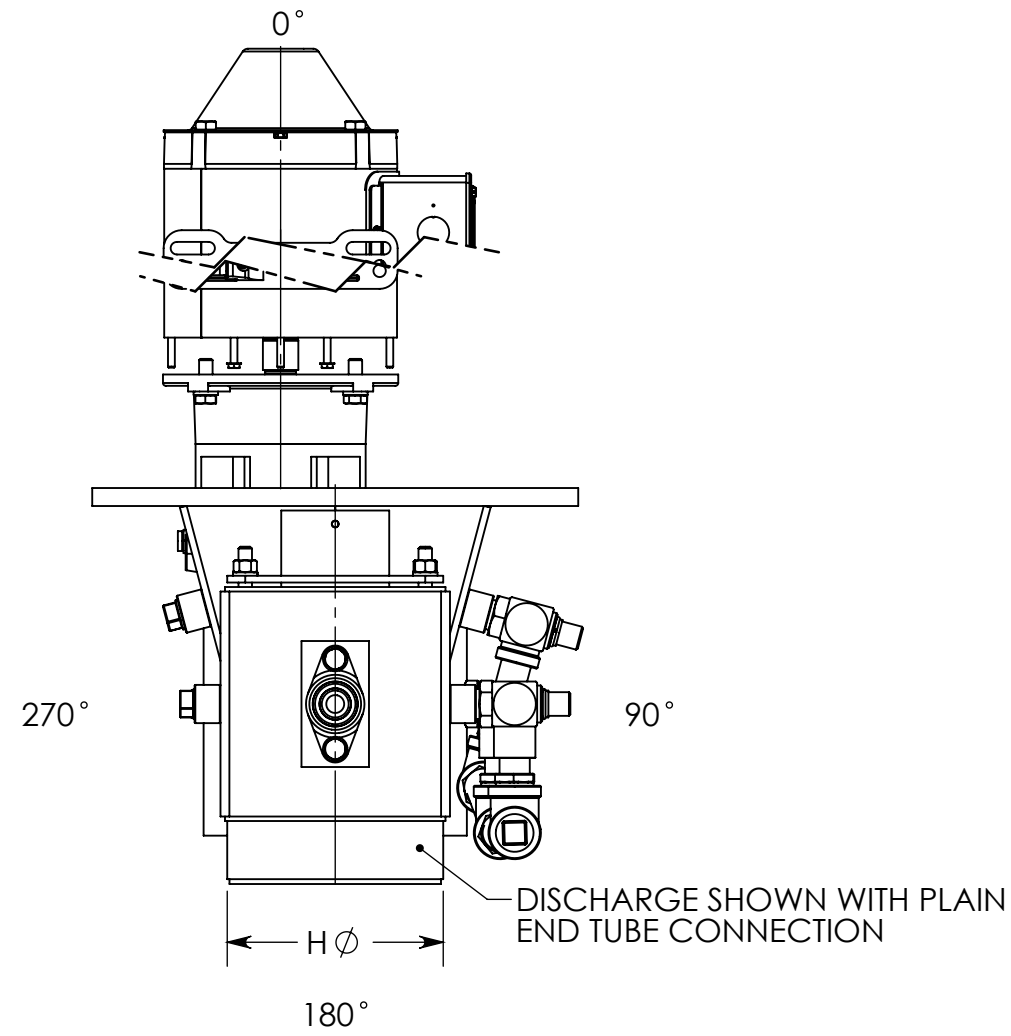
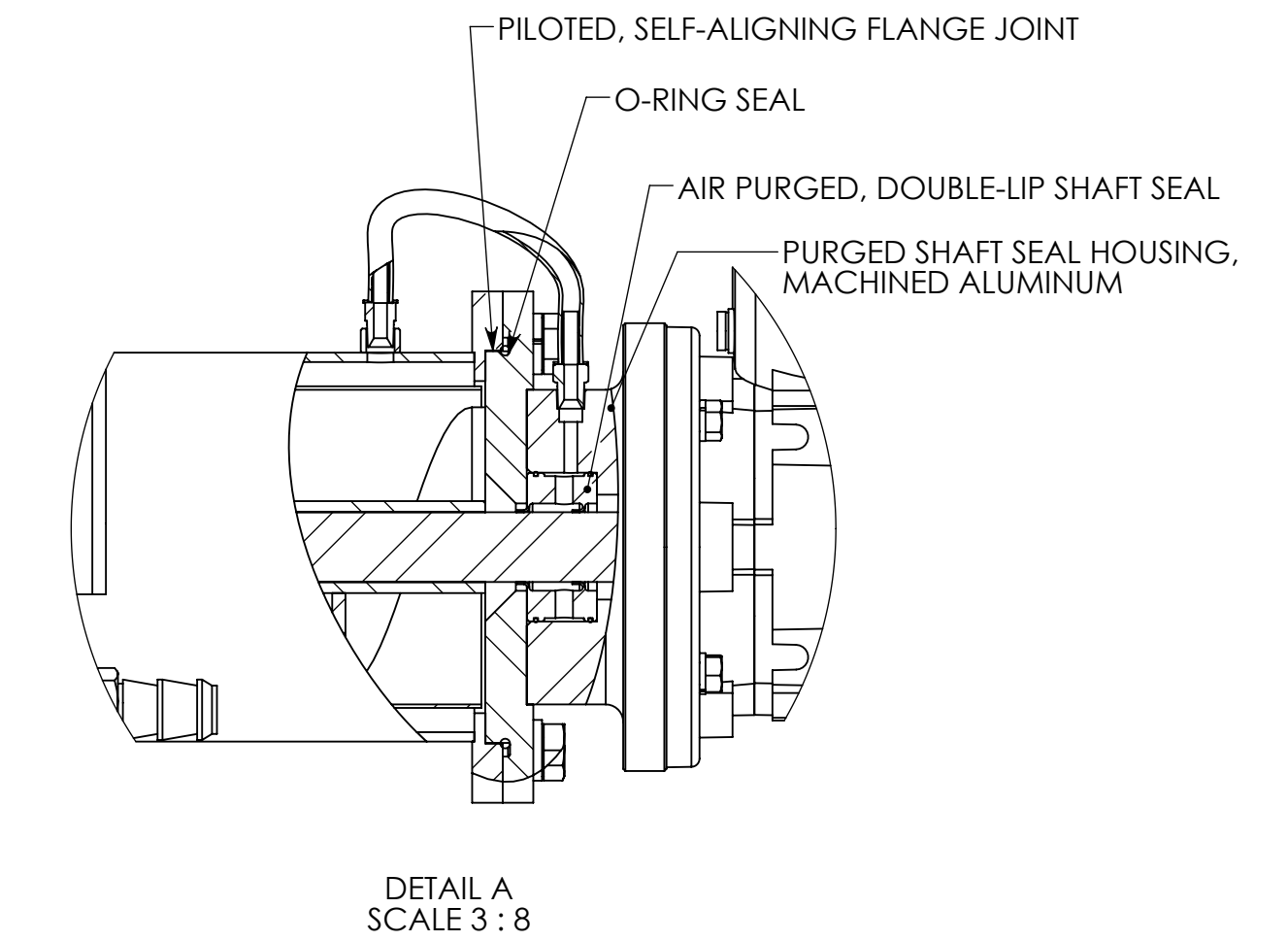
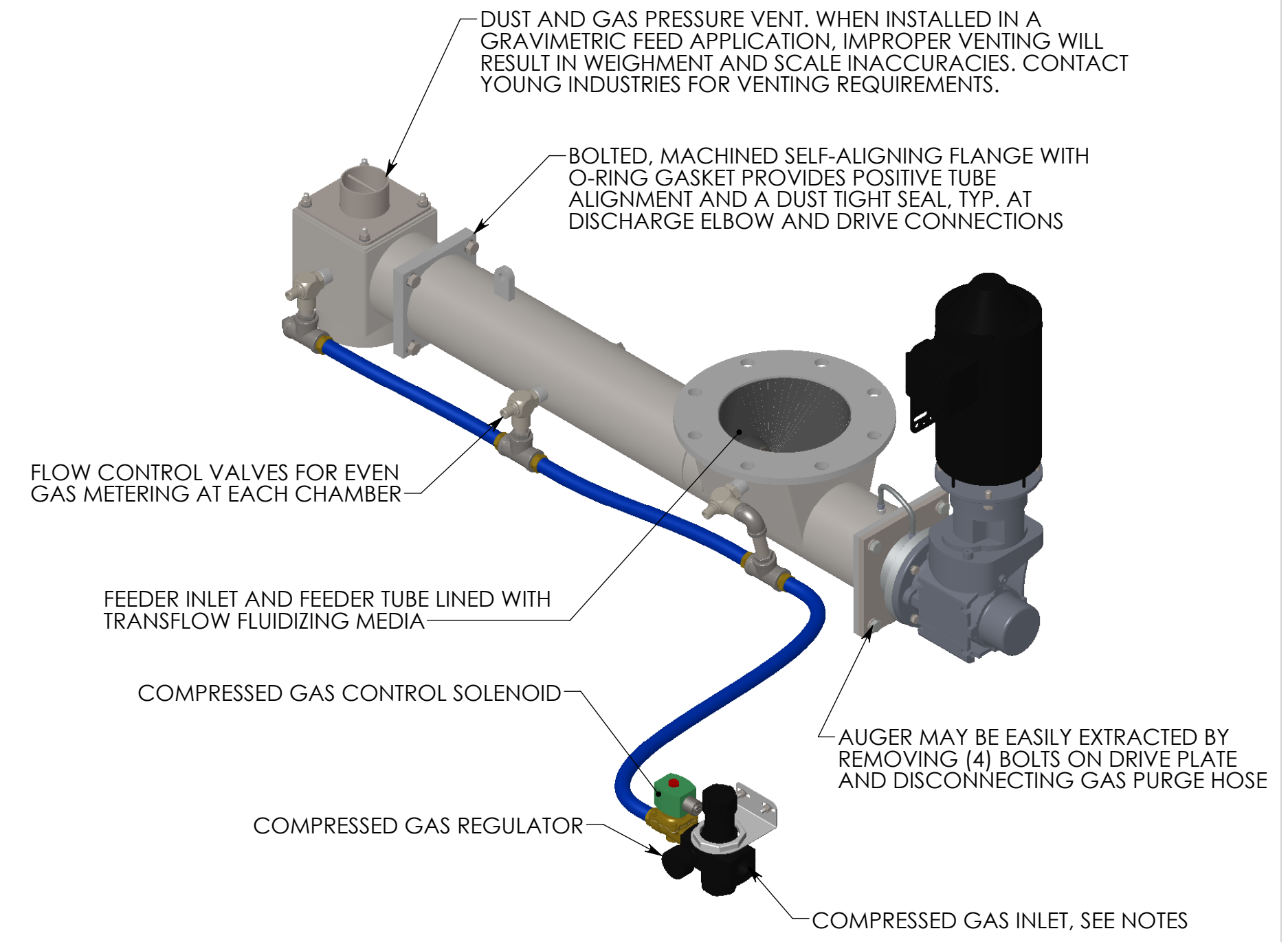
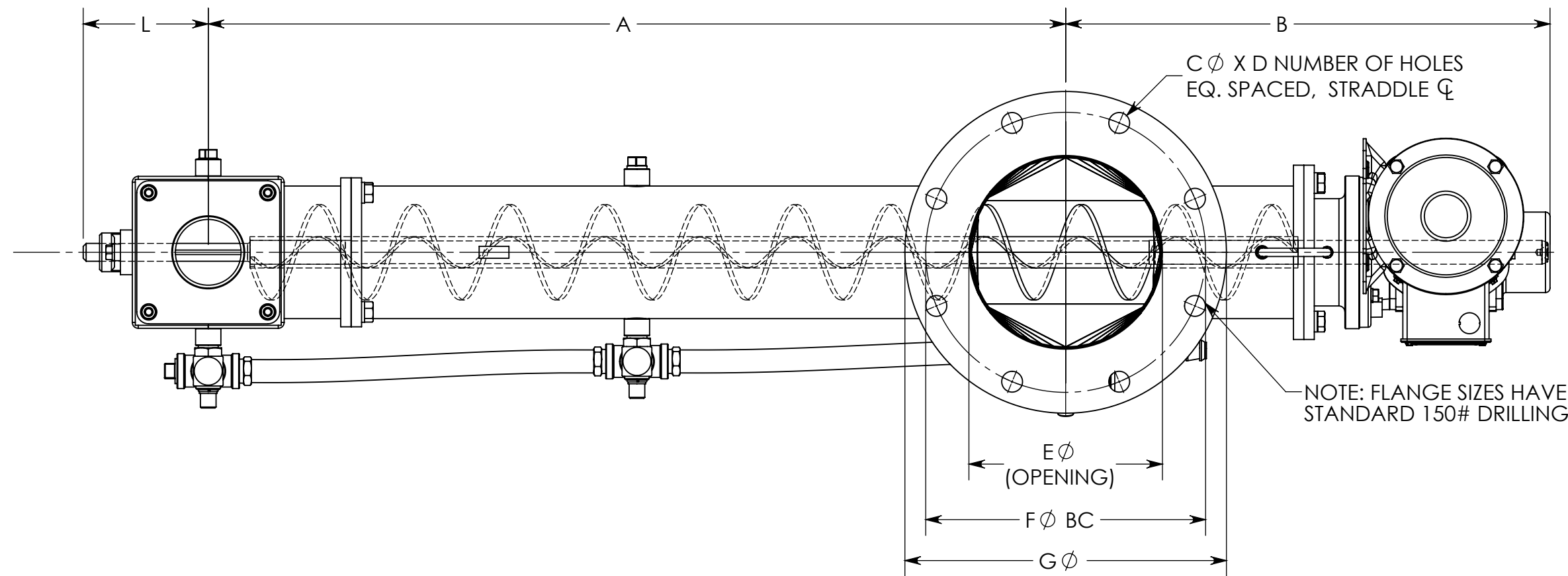
BUTTERFLY VALVE OPTION

MATERIAL FLOW FROM DISCHARGE MAY BE PREVENTED BY USING OPTIONAL YOUNG INDUSTRIES POWDERFLOW BUTTERFLY VALVE WHICH IS DESIGNED ESPECIALLY FOR USE WITH POWDERS. CONTACT YOUNG INDUSTRIES FOR MORE INFO. THIS OPTION IS TYPICALLY USED ON BATCHING APPLICATIONS, WITH PORTABLE FEEDERS, OR INSTANCES WHERE DISCHARGE OF FEEDER SHOULD BE SEALED FROM PROCESS WHEN NOT IN USE.

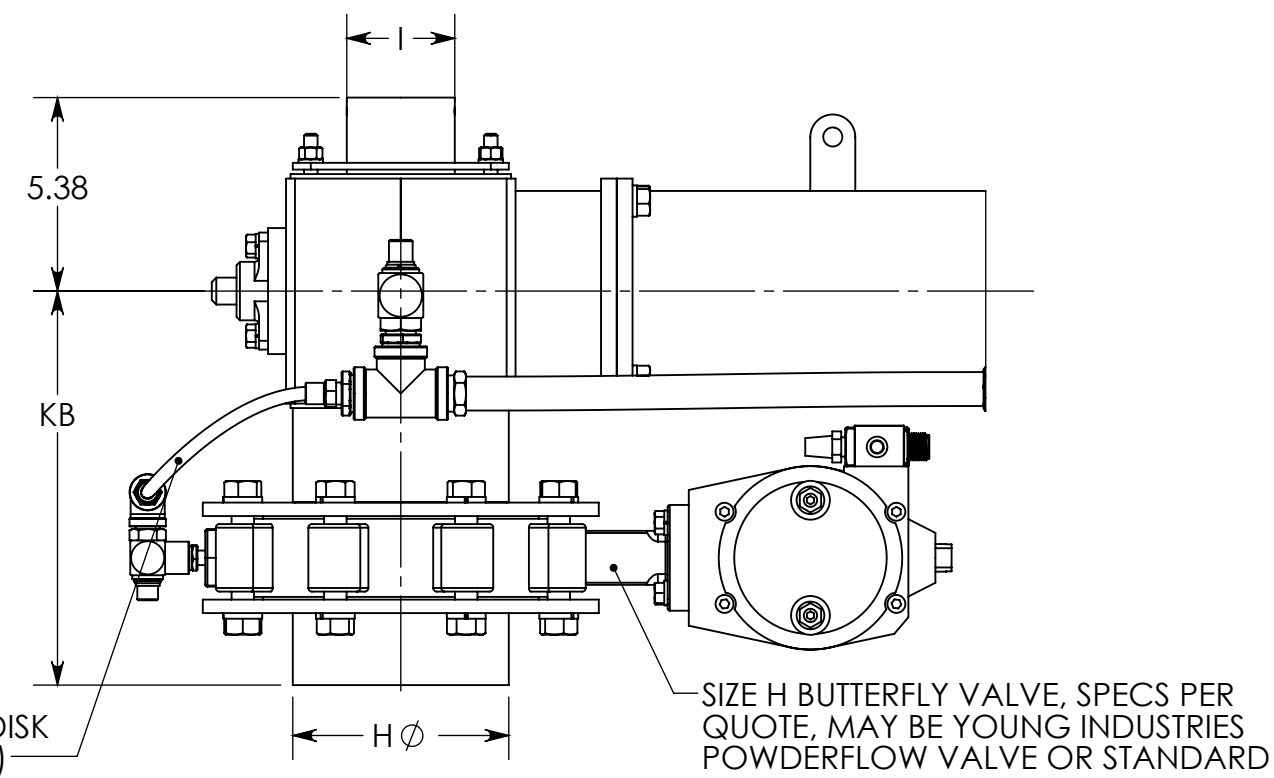
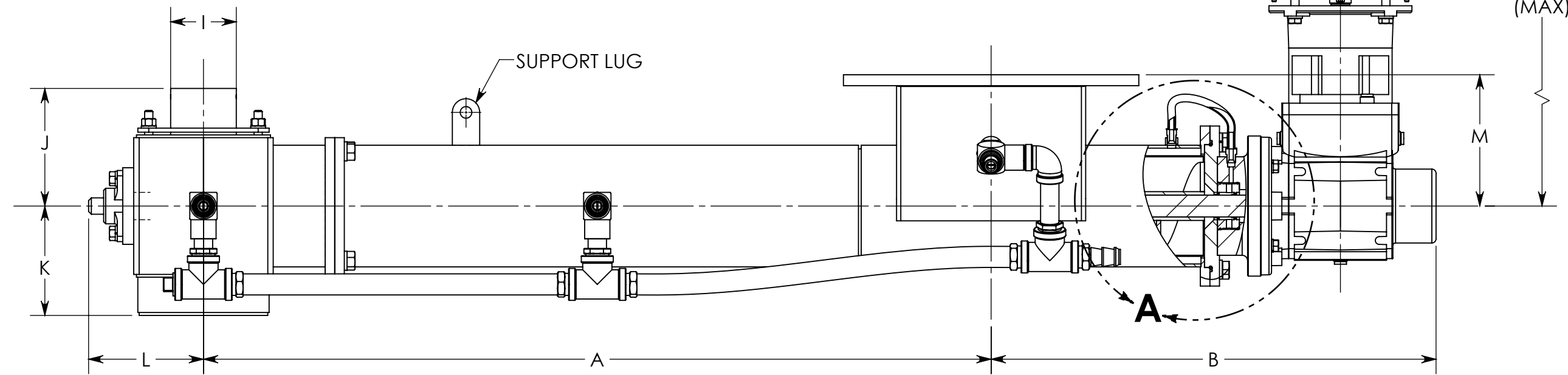
* THIS DRAWING SHOULD BE USED FOR REFERENCE ONLY AND SHOULD NOT BE USED FOR BUILDING PURPOSES. ALL DETAILS ARE SUBJECT TO CHANGE WITHOUT NOTICE. CONTACT YOUNG INDUSTRIES FOR MORE INFORMATION OR CURRENT SPECS.

FEEDER SIZE (AUGER DIA.)	CAPACITY AT 100% FULL (CU. FT./HR.)	A	B	C	D	E	F	G	H	I	J	K	KB	L	M	N
1.00	.08 - 4.0	12.00 - 32.00	19.50	1.00	12	10.00	14.25	16.00	4.00	2.00	4.81	5.00	9.75	4.00	8.00	19.00
1.50	0.7 - 15	12.00 - 60.00	19.50	1.00	12	10.00	14.25	16.00	4.00	2.00	4.81	5.00	9.75	4.00	8.00	19.00
2.00	1.6 - 35	12.00 - 60.00	19.50	1.00	12	10.00	14.25	16.00	4.00	2.00	4.81	5.00	9.75	4.00	8.00	19.00
3.00	5.7 - 120	18.00 - 72.00	21.00	1.00	12	10.00	14.25	16.00	6.00	3.00	5.56	5.00	11.00	5.50	8.00	24.00
4.00	14 - 290	24.00 - 72.00	21.00	1.00	12	10.00	14.25	16.00	6.00	3.00	5.56	5.00	11.00	5.50	8.00	24.00
5.00	27 - 550	24.00 - 96.00	23.00	1.00	12	10.00	14.25	16.00	8.00	4.00	7.31	8.0	13.25	7.00	8.00	24.00
6.00	34 - 700	24.00 - 96.00	23.00	1.00	12	10.00	14.25	16.00	8.00	4.00	7.31	8.0	13.25	7.00	8.00	24.00
8.00	70 - 1,450	32.00 - 120.00	25.00	1.00	12	12.00	17.00	19.00	10.00	6.00	8.31	8.50	14.00	8.75	10.00	25.00

NOTE: CAPACITIES ABOVE REFLECT THEORETICAL CAPACITY AT 100% FILL. ACTUAL CAPACITY EXPECTED TO BE APPROXIMATELY 75% OF THEORETICAL CAPACITY



DRIVE SYSTEM SHOWN ABOVE AT 0° POSITION. DRIVE MAY BE ROTATED TO BE POSITIONED AT 0°, 90°, OR 270° HOWEVER IT IS RECOMMENDED THAT DRIVE **NOT** BE POSITIONING AT 180° WHICH COULD RESULT IN OIL LEAK TO MOTOR IF REDUCER SHAFT SEAL LEAKS



DISCHARGE SHOWN WITH OPTIONAL FLANGED CONNECTION AND BUTTERFLY VALVE. SEE NOTES

REV. NO.	DESCRIPTION	DATE	BY
5	UPDATED DESIGN AND DIMENSIONS TO CURRENT STANDARD	11/01/19	JAH
4	CHANGED CENTER COUPLING TO SAF CONNECTION	03/17/17	JAH
3	CHANGED DISCHARGE DIAMETER FROM PIPE SIZES TO TUBE SIZES TO ADAPT TO FLEXIBLE BELLOWS	09/27/10	JAH

REVISIONS

CUSTOMER:
 CUSTOMER PO NUMBER:
 YOUNG JOB NUMBER:
 TITLE
 YOUNG INDUSTRIES MODEL 2 STS FEEDER CONVEYOR



GENERAL TOLERANCES	
UNLESS OTHERWISE SPECIFIED THE FOLLOWING SHALL APPLY	
MACHINING - .XX= .02 .XXX= .005 ANGLE= .50°	
SURFACE ROUGHNESS HEIGHT 63 MICRONS OR LESS	
FABRICATION - UNDER 6 6 TO 24 24 TO 60 OVER 60	
± .06 ± .12 ± .19 ± .25	
UNLESS OTHERWISE SPECIFIED DIMENSIONS ARE IN INCHES	

DRAWN BY: JAH	DATE DRAWN: 02/11/07
CHECKED BY: JAH	SCALE=3:16
DRAWING NUMBER D-20623-00	SHEET 1 OF 1
	REV: 5