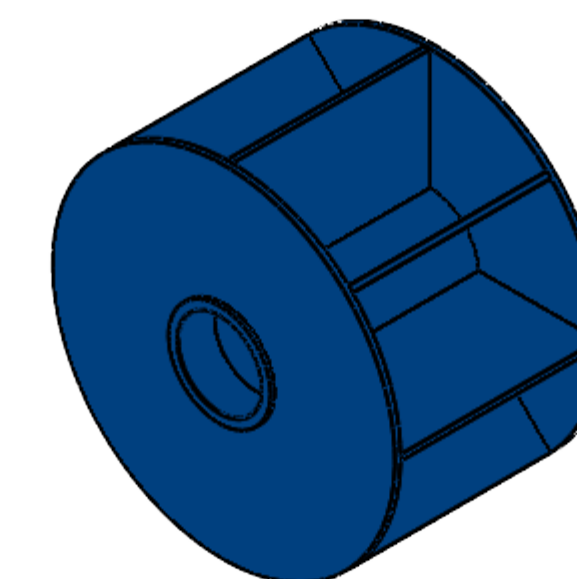
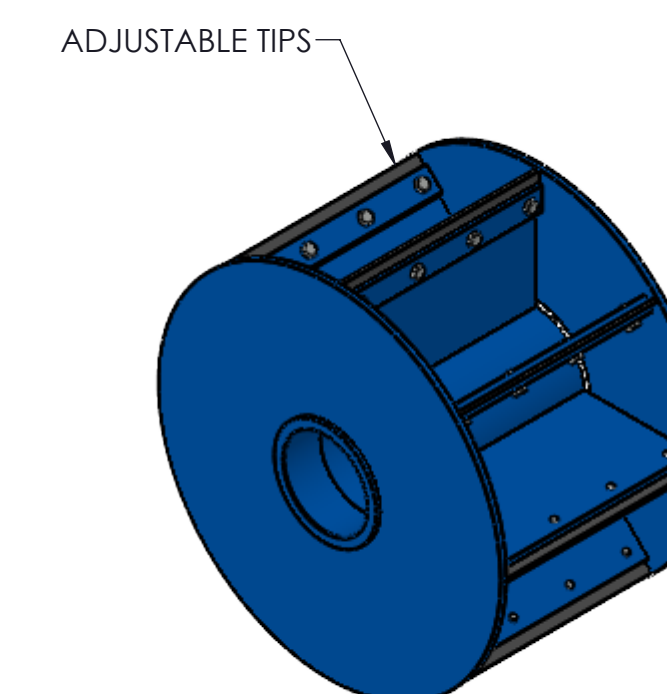


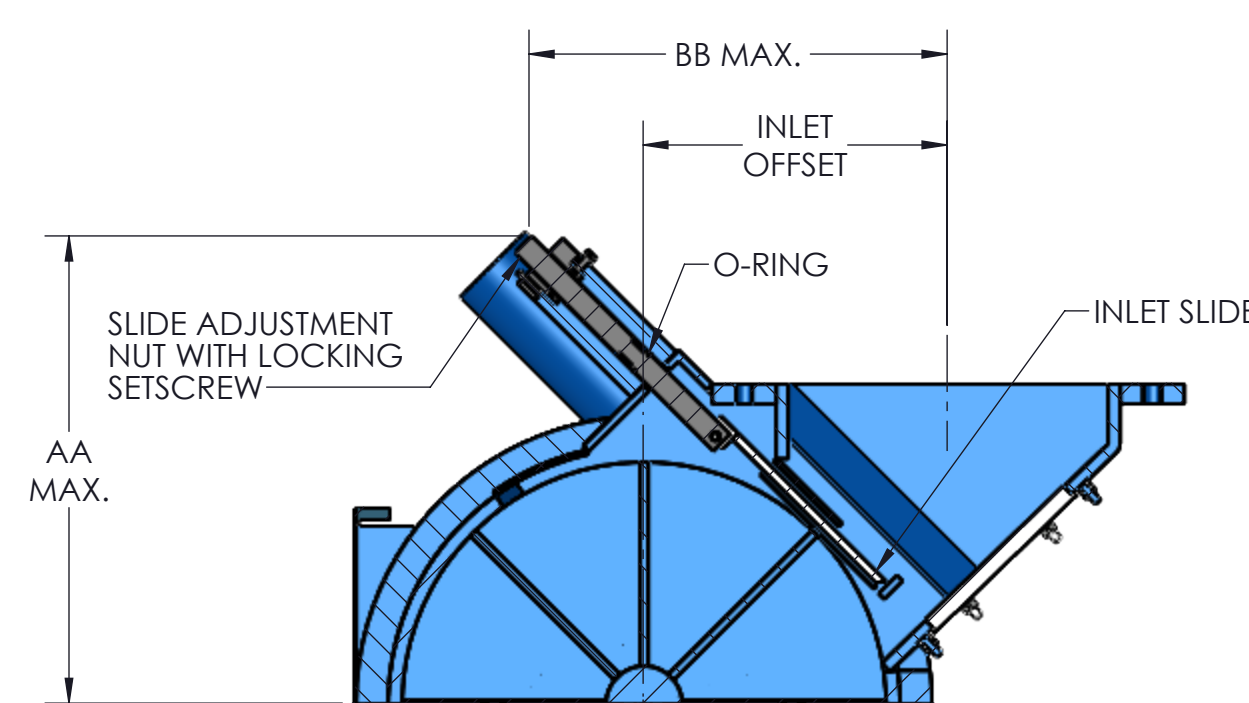
ROUND FLANGE DETAIL  
(SEE NOTE # 2)



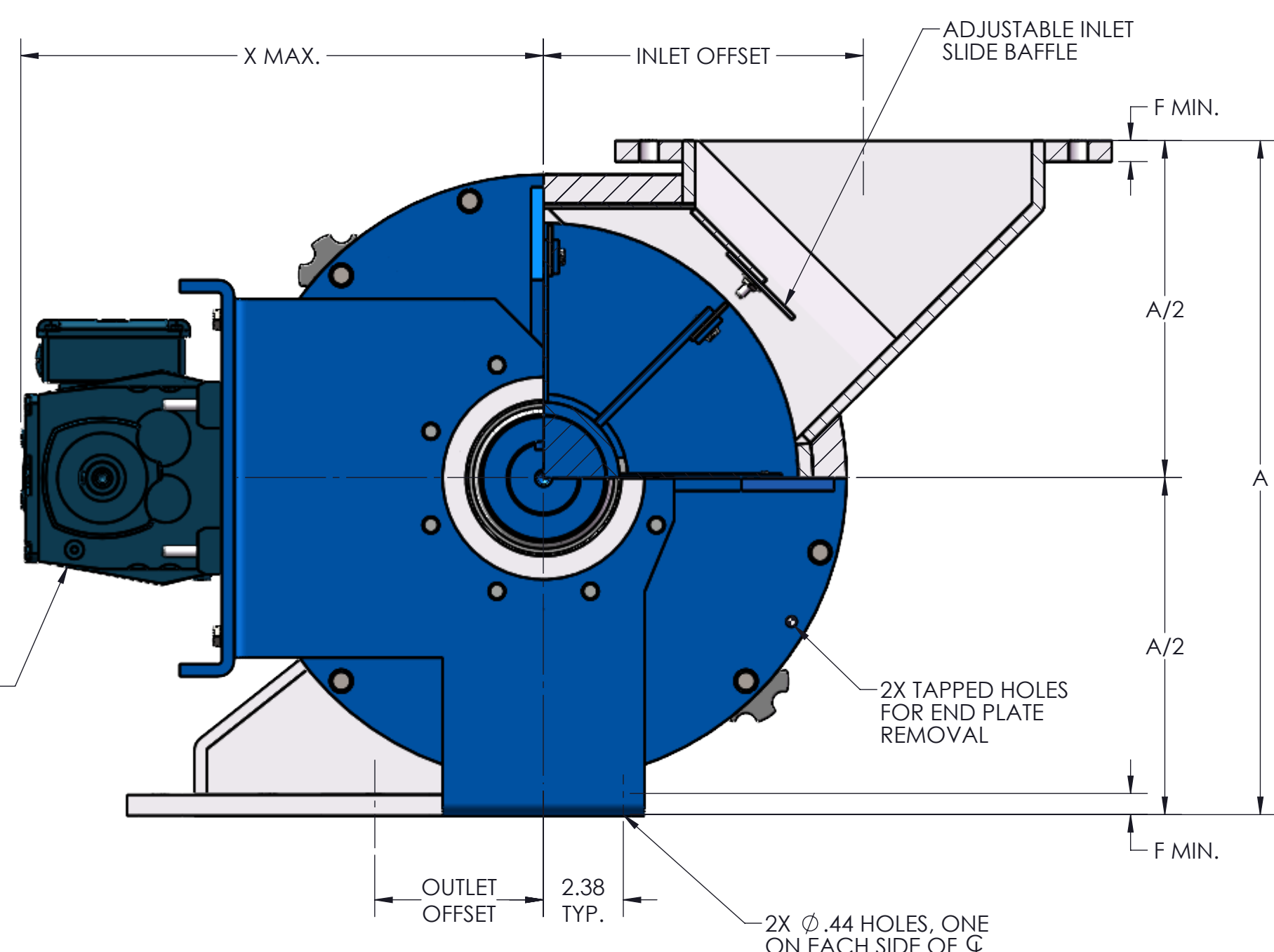
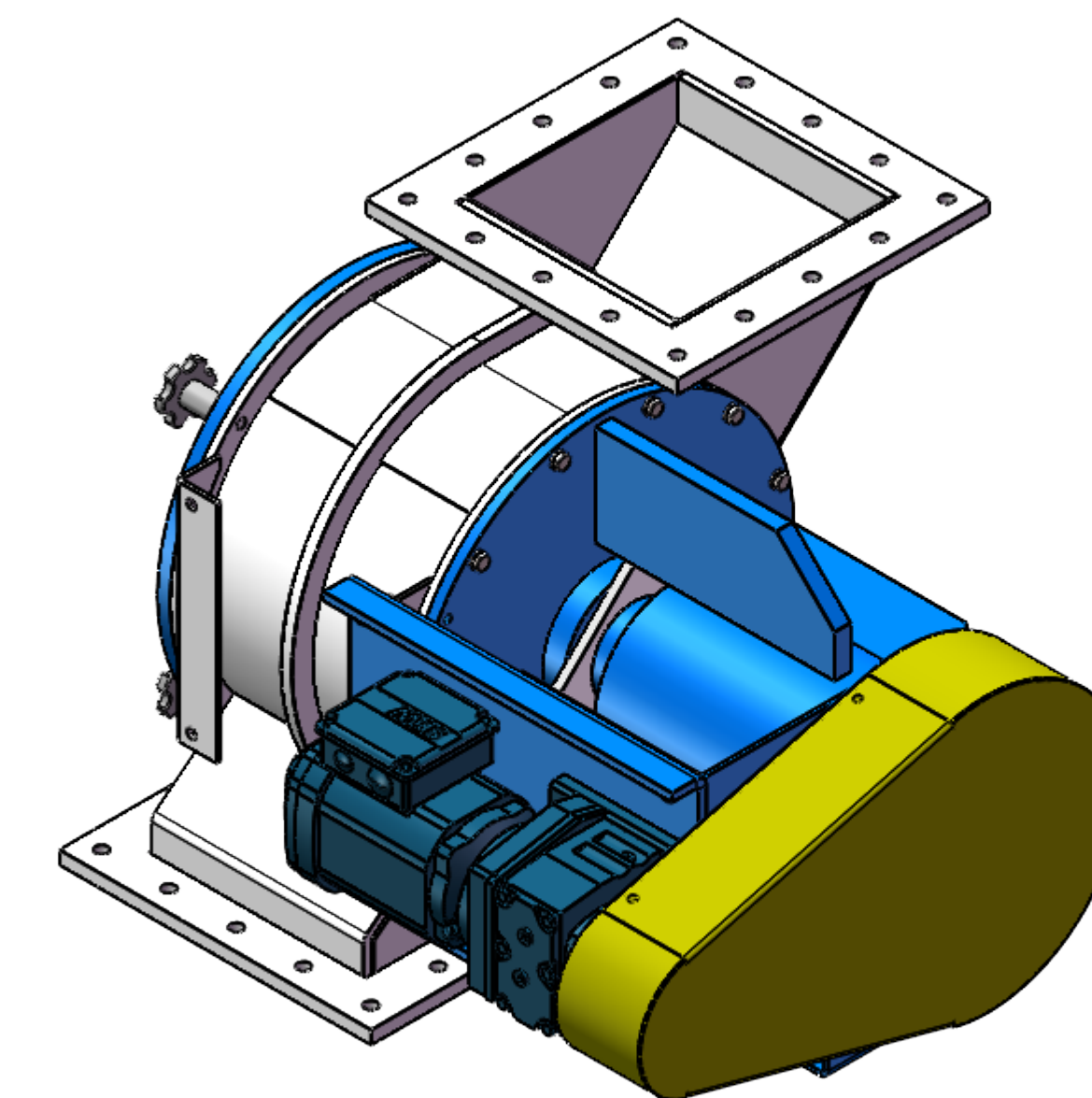
TYPE 'AS' ROTOR



TYPE 'DS' ROTOR

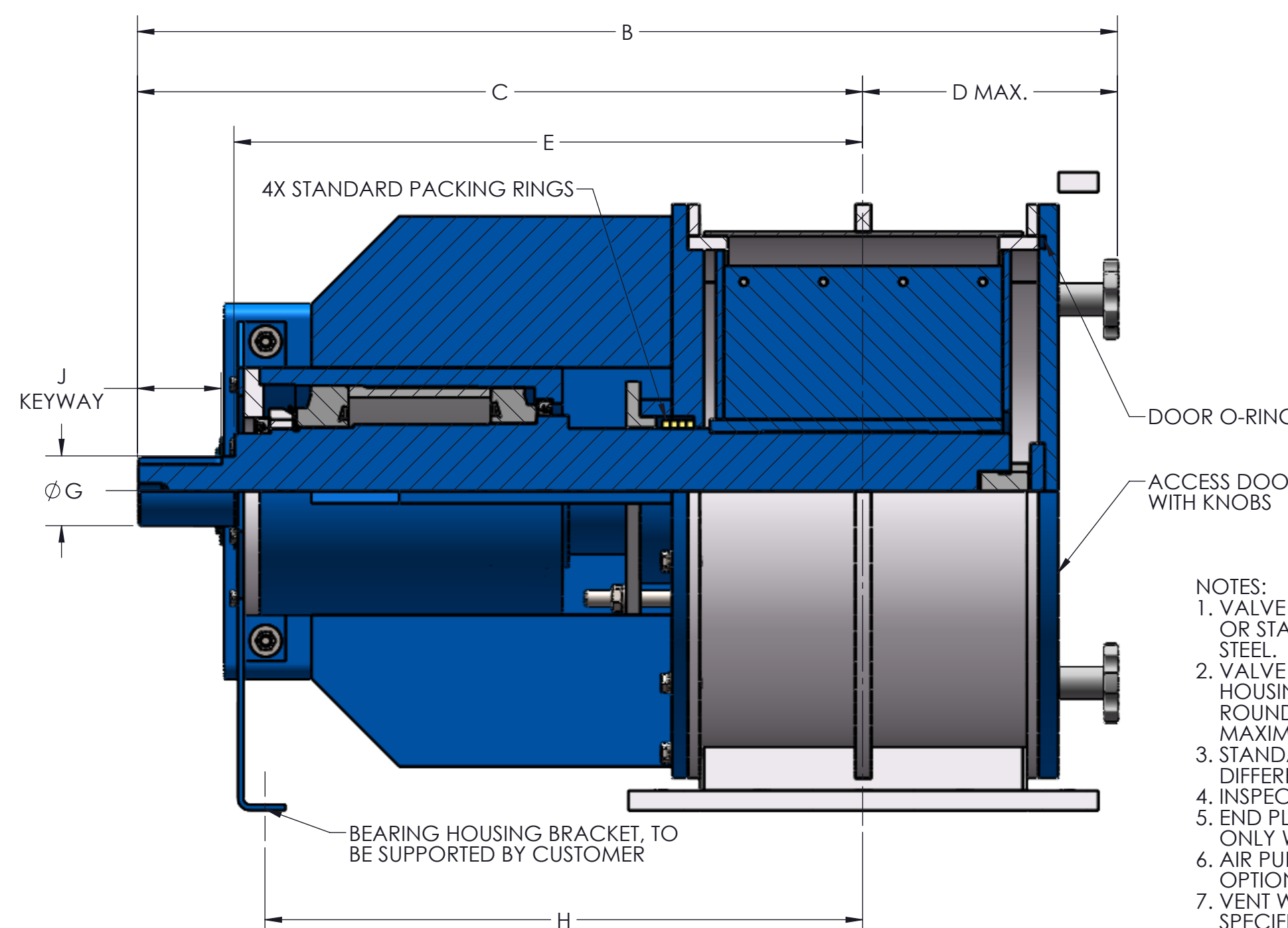


EXTERNAL ADJUSTMENT INLET SLIDE  
(SEE NOTE #8)



PARALLEL SHAFT  
GEARMOTOR

2X TAPPED HOLES  
FOR END PLATE  
REMOVAL



DOOR O-RING

ACCESS DOOR  
WITH KNOBS

BEARING HOUSING BRACKET, TO  
BE SUPPORTED BY CUSTOMER

NOTES:

1. VALVE HOUSINGS ARE CAST OF IRON OR ALUMINUM; FABRICATED OF STEEL OR STAINLESS STEEL. ALL ROTORS ARE FABRICATED OF STEEL OR STAINLESS STEEL.
2. VALVE HOUSINGS ARE AVAILABLE WITH A SQUARE OUTLET ONLY, FABRICATED HOUSINGS ARE AVAILABLE WITH EITHER SQUARE OR ROUND INLET ONLY. ROUND FLANGES MATCH 150# ANSI DRILLING. FLANGE DETAIL SHOWS MAXIMUM NO. OF TAPPED HOLES.
3. STANDARD HOUSINGS ARE DESIGNED FOR 15 PSI (MAX) INTERNAL & DIFFERENTIAL @ 250 DEGREES F.
4. INSPECTION DOOR IS STANDARD.
5. END PLATE AND INSPECTION O-RINGS ARE OPTIONAL AND WILL BE FURNISHED ONLY WHEN SPECIFIED.
6. AIR PURGE CONNECTIONS 1/8" NPT WITH BRASS LANTERN RINGS ARE OPTIONAL AND WILL BE FURNISHED ONLY WHEN SPECIFIED.
7. VENT WITH SCH 10 PIPE IS OPTIONAL AND WILL BE FURNISHED ONLY WHEN SPECIFIED.
8. EXTERNAL ADJUSTMENT INLET SLIDE IS OPTIONAL AND WILL BE FURNISHED ONLY WHEN SPECIFIED. EXTERNAL ADJUSTMENT IS AVAILABLE ONLY ON FABRICATED VALVES WITH A SQUARE INLET

SIZE	ROTOR DIA. X LG.	ROTOR CAP. (CU. FT. PER REV.)	INLET OFFSET	OUTLET OFFSET	STD RPM	STD HP	A	B	C	D	E	F	G	H	J	K	L	M	N	Q	R	S	T	U	V	W	X	WEIGHT C/S	
8	12 X 8	.146	.144	8.00	4.00	30	.75	17.00	28.15	21.28	6.88	18.25	.44	1.94	17.06	.50 X .25 X 2.62	13.50	11.75	8.00	(8) .88	11.50	8.00	.62	5.75	2.56	(12) .56	(4) .50-13UNC-2B	13.88	425
10	15 X 10	.305	.302	9.50	5.00	28	.75	20.00	30.75	22.75	8.00	19.72	.44	2.19	18.75	.50 X .25 X 2.62	16.00	14.25	10.00	(12) 1.00	14.75	10.00	1.00	7.38	3.19	(11) .56	(5) .50-13UNC-2B	15.50	560

GENERAL TOLERANCES UNLESS OTHERWISE SPECIFIED THE FOLLOWING SHALL APPLY	
MACHINING	XX± .02 XXX± .005 ANGLES .50°
SURFACE ROUGHNESS	HEIGHT .63 MICRORINCHES OR LESS
FABRICATION	UNDER 6 6 TO 24 24 TO 40 OVER 40
	± .06 ± .12 ± .19 ± .25
UNLESS OTHERWISE SPECIFIED DIMENSIONS ARE IN INCHES. UNLESS SPECIFIED DIMENSIONS & TOLERANCES INTERPRETED PER ASME Y14.5-2009	

REV. NO.	DESCRIPTION	DATE	BY
REVISIONS			
CUSTOMER:			
CUSTOMER PO NUMBER:			
YOUNG JOB NUMBER:			
TITLE			
YOUNG INDUSTRIES MODEL 'QC-SE' ROTARY VALVE, SIZE 8"-10", CLASS 15 W/ PARALLEL SHAFT DRIVE. STANDARD DIMENSION SHEET			
DRAWN BY: MEA		DATE: 08/01/24	
CHECKED BY:		SCALE: 1:4	
DRAWING NUMBER		SHEET	
D-21404-23		1 OF 1	
		REV: 00	

