

Application Data Sheet

Diverter Valve

Customer Information

Company: _____
 Name: _____
 Title: _____
 Address: _____
 Email: _____
 Phone: _____

Material Information

Materials: _____
 Bulk Densities: _____ lbs/ft³
 Particle Size: _____
 Powder Pellet
 Material Flowability: _____
 Hygroscopic Abrasive Hazardous Friable
 Toxic Corrosive Heat Sensitive Cohesive

Construction Requirements

Material of Construction:
 Carbon Steel 304 S/S 316 S/S Other: _____
 Valve Actuators:
 Not Required Manual Pneumatic Electric
 Solenoid: Single Double
 Limit Switches: SPDT DPDT
 Special Requirements:

Electrical Requirements

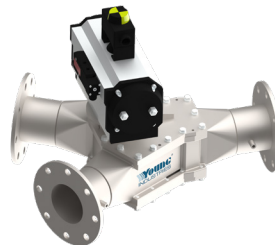
NEMA 4 Solenoid 120 VAC 24 VDC
 NEMA 7/9 Solenoid 120 VAC 24 VDC

Valve Configuration

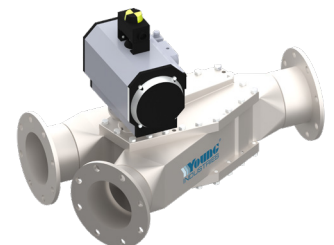
Gravity Flow Valve
 Symmetric Y Asymmetric Y
 Diversion Angle: 30 Degrees 45 Degrees
 Round Flanged Ends Square Flanged Ends
 Pneumatic Convey Valve
 Symmetric Y-30 Degrees Asymmetric Y-30 Degrees
 Plain Ends Flanged Ends

Application Information

Line Size: _____ in.
 Pressure/Vacuum:
 Design: _____ PSI/in. Hg Operating: _____ PSI/in. Hg
 Temperature:
 Design: _____ °F Operating: _____ °F
 Design: Indoors Outdoors



Symmetric



Asymmetric

