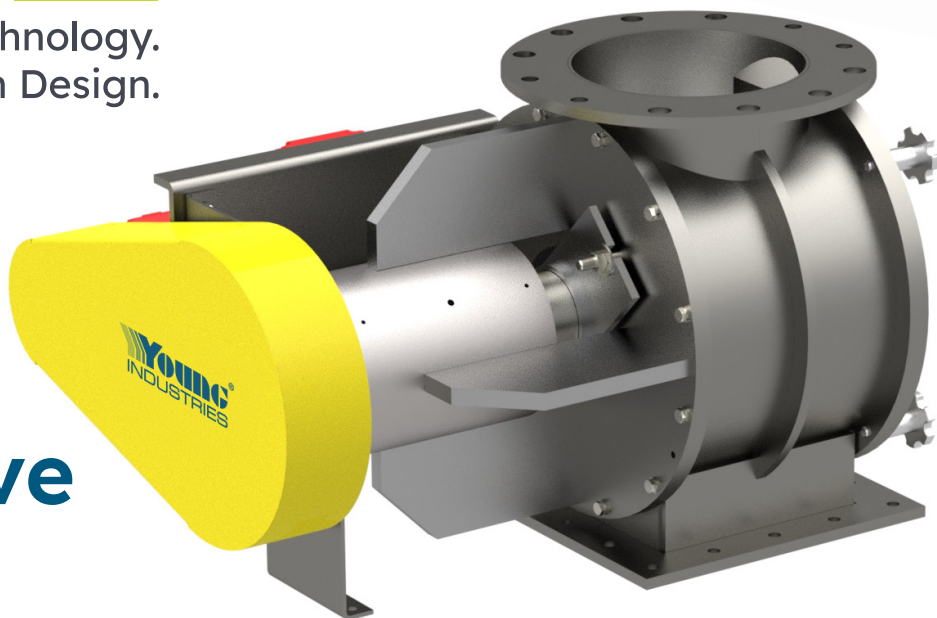


Advanced Technology.
Proven Design.

Model QC Rotary Valve



Engineered for Efficiency. Built for Frequent Cleaning.

When your process demands regular cleaning and maintenance, Young Industries Quick Clean Rotary Valves provide the perfect solution. Designed with a unique cantilevered rotor, these valves allow complete access to the interior, simplifying disassembly and ensuring thorough cleaning with minimal downtime.

Standard Features:

The Quick Clean Rotary Valve enhances operational efficiency while meeting stringent cleanliness requirements:

- ▼ **Heavy-Duty Construction:** Built to withstand 15 PSIG with options in iron, carbon steel, or 300-series stainless steel.
- ▼ **Cantilevered Rotor Design:** Rotor is supported by precision outboard bearings on one side, allowing for complete removal from the opposite end.
- ▼ **Removable Access Door:** Hand knobs provide easy removal, granting complete access to the valve interior for maintenance and cleaning.
- ▼ **Flexible Connections:** Available with round or square flanged connections for seamless integration into your system.



Learn
more at
younginds.com

Model QC Rotary Valve

Simplify Cleaning with the Model QC Rotary Valve

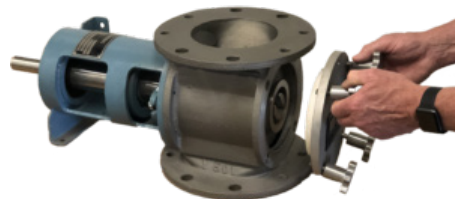
The Model QC Rotary Valve is designed for effortless maintenance, featuring a shaft seal retained on the valve housing, making rotor removal even easier. Its innovative design ensures that all product contact surfaces are fully accessible, enabling thorough cleaning and rapid reassembly.

How It Works:

1. The access door is removed using hand knobs, providing a clear view of the valve interior.
2. The cantilevered rotor slides off the shaft, leaving the shaft seal securely attached to the housing.
3. Cleaning and maintenance are completed quickly, reducing downtime and ensuring sanitary operation.



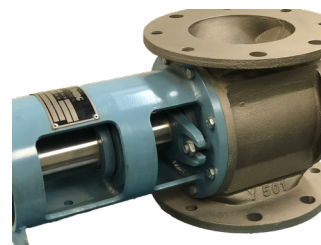
A. Access door for rotor removal.



B. Access door removed.



C. Rotor slides off shaft for easy cleaning.



D. Shaft seal is retained on the valve housing

Optional Features:

Tailor the Quick Clean Rotary Valve to your specific process needs with a range of optional features:

- ▼ **Interior Polishing:** Polished or electro-polished surfaces for enhanced cleanliness.
- ▼ **Hinged Access Cover:** Simplifies rotor removal in larger valve sizes.
- ▼ **TransFlow[®] Fluidized Rotor:** Designed for handling cohesive powders.
- ▼ **Replaceable Rotor Tips:** Available in abrasion-resistant or flexible materials.
- ▼ **Custom Drives:** Roller chain drive with TEFC gearmotor, with explosion-proof motors available.
- ▼ **Special Coatings:** Exterior finishes tailored to customer specifications.