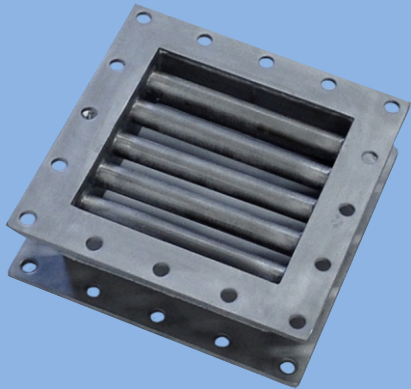


Young Industries Safety-Flow™ Gratings

Gratings designed to protect an operator as well as eliminating bridging of fine cohesive powders on the grating bars



Typical Safety-Flow™ Grating
(Patent Pending)

Problem: Providing reliable flow of powder while having adequate protection for the operator.

Solution: Young Industries Safety-Flow™ grating uses TransFlow® Technology to condition powders to freely discharge around the grating bars.

TransFlow® conditions powders to make them flow

The Safety-Flow™ grating consists of bars, closely spaced to protect the operator when he must perform routine work in the product flow area.

The grating bars are constructed using Trans-Flow® Technology. The Trans-Flow® uses air or gas to condition the product to eliminate any bridging of the material so it will flow around the grating bars.

The grate can be fabricated in the connection or bolt in place between flanges.

Typical air or gas usage is 3 to 17 SCFM and 3 to 15 PSIG. Adjust air or gas supply until desired material flow is achieved.

Safety-Flow Applications

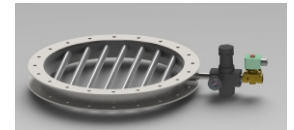
Use the Safety-Flow™ Grating on:

- Inlet or outlet of rotary valves
- Inlets to screw conveyors or flex augers
- Bag dump station grating
- Bulk bag access hoppers

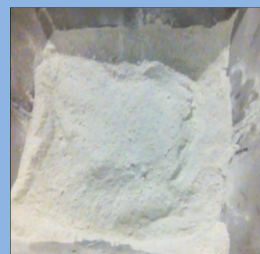
The Safety-Flow™ gratings are custom manufactured to your application.

Gratings can be made to match a 6 inch. diameter flanged connections or as large as a 60 inch. square inlet connections.

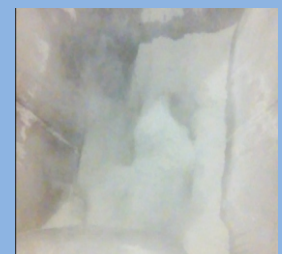
Available in carbon steel, 304 Stainless Steel and 316 Stainless Steel construction.



Safety-Flow™ Grating in Action



Powder bridges over the grating bar when the TransFlow® is off



When TransFlow® is turned on the powder is conditioned and flows around the bars



Powder continues to flow while TransFlow® is turned on.



Normal operation when the TransFlow® air is turned on.



For more information visit our
website
at www.younginds.com/SF
or
call 570-546-3165