



Touchstone Rate Controller

Designed as a single feeder control system that can operate one complete feeder system including a refill valve. It boasts a user friendly color touch screen interface that is easy to understand and operate both locally or remotely. Its build-in help menus answer common questions without the need to find a manual. Its standard Ethernet IP communications allows it to integrate well into other control systems. VNC capabilities make it easy to mirror the HMI to virtually any device connected to the same network using free VNC Software. Its multi-level password protection allows the supervisor to limit access to setup screens .

Standard package is rated for use in a NEMA 4 environment but additional enclosures and control package designs are available to meet all common area classifications including corrosive and explosion hazard environments.

Features:

- 10.4" Color Touch Screen with 800 x 600 Resolution
- Full Color Trend Graphs provide a clear concise view of the process
- SWIFT Seek Technology allows quick and accurate seek time when Rate feed starts up or a set point change occurs
- Refill vector auto-adjusts motor speed based on historical motor speed at current gross weight.
- Auto-Tune feature for quick & Easy Setup
- Totalizer tracks total amount of material discharged since last reset
- Built-In alarms for easy diagnostics and process monitoring
- Built in Help Screens provide quick answers to common questions without the need to read a manual
- Auto-Disturbance Detection senses a scale disturbance and within micro-seconds, it enters an open loop volumetric mode which adjusts the motor speed based on the hopper level and quickly recovers when the disturbance is no longer present
- Standard Hardware includes extra IO for remote monitoring and operation along with spare IO that can be custom configured for special applications
- VNC Support for convenient mirroring of HMI to any VNC Enabled device connected to the same network such as PC's, Laptops, Smartphones, iPads, or VNC enabled HMI's
- Universal Power Supply accepts 85V to 150V AC Current (other voltages available as options)
- Ambient Design Temperature 32 deg. F (0 deg. C) to 122 deg. F (50 deg. C)
- Standard Area Classification: NEMA 4
 Optional Area Ratings: NEMA 4X
 Class 1 Div 1 (X-Purge)
 Class 1 Div 2 (Z-Purge)
 Class 2 Div. 1 (X-Purge)
 Class 2 Div 2 (Z-Purge)



- Auto Refill Cycle
- Multi-Level Password Protection
- Multi-Language User Support Available
- Universal Motor Output Speed Reference will control DC Stepper Motors, or 3PH Motors
- Web server for easy setup and diagnostics using standard web browser
- Standard Communication protocol: Ethernet IP
 Optional communications available for:
 - Modbus/IP
 - Modbus RTU

For more information contact:

YOUNG INDUSTRIES
 16 Painter Street
 Muncy, PA 17756

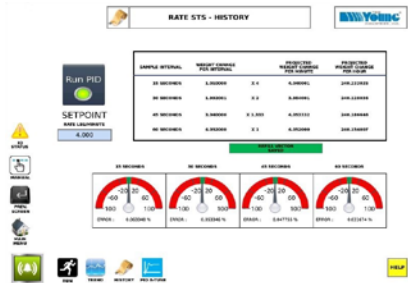
By email: mktinfo@younginds.com
 By Phone: 1-800 546-3165

JUST A FEW OF OUR SMART DESIGN FEATURES



FEEDER RUN SCREEN

Easy to understand displays make training a cinch



TRUE RATE HISTORY SCREEN

Shows actual feed rate over time sampled in 15 second, 30 second, 45 second, and 60 second intervals to show actual feed rate over time without the need to use a check scale or take the feeder out of service to check accuracy



TREND SCREEN

Trend Screen provides a quick and easy to understand graphical representation of common interest variables



VNC SUPPORT

Allows control Screen to be mirrored onto any VNC enabled device connected to the same network such as iPad, iPhone, Laptop or Desktop PC



BUILT IN HELP SCREENS

Built in Help Screens provide quick answers to common questions without the need to seek the manual