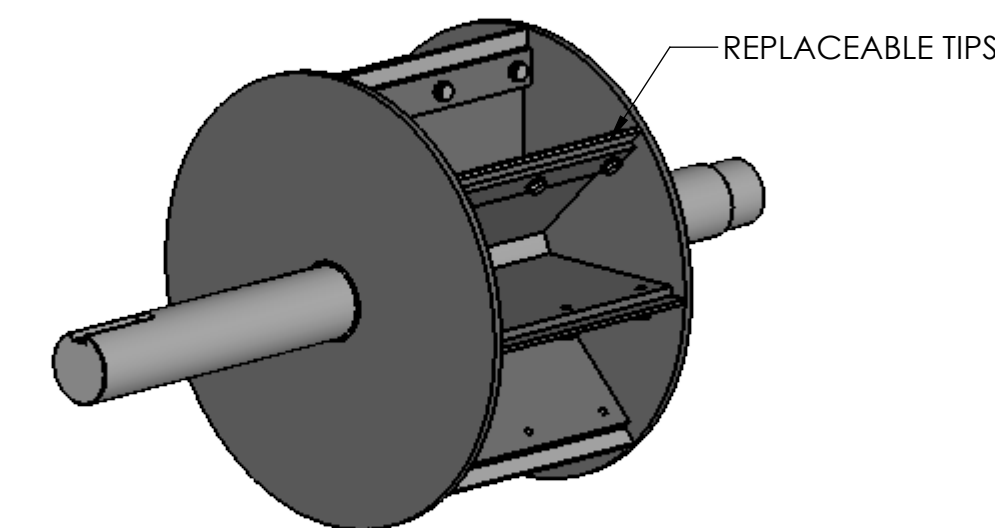


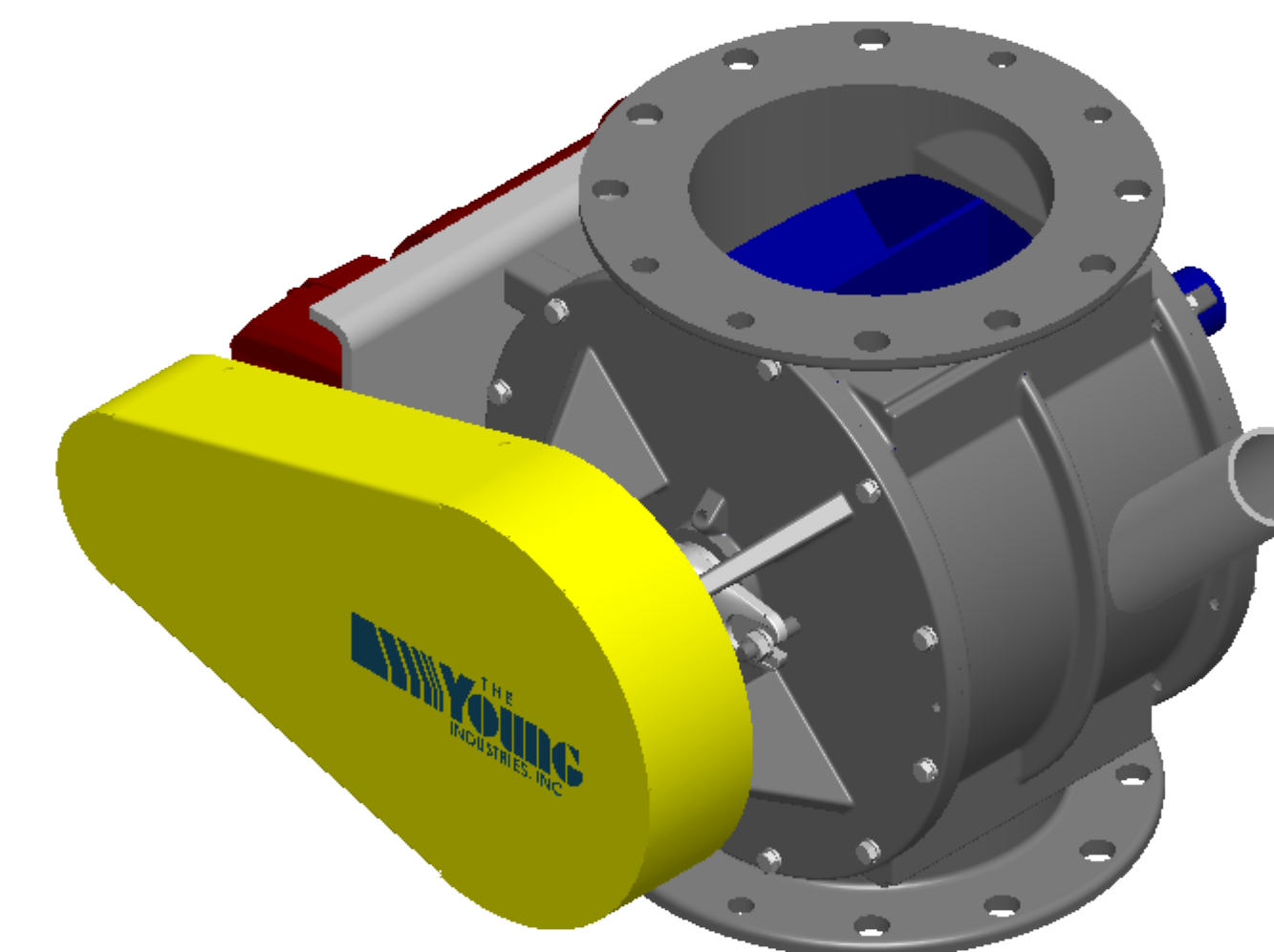
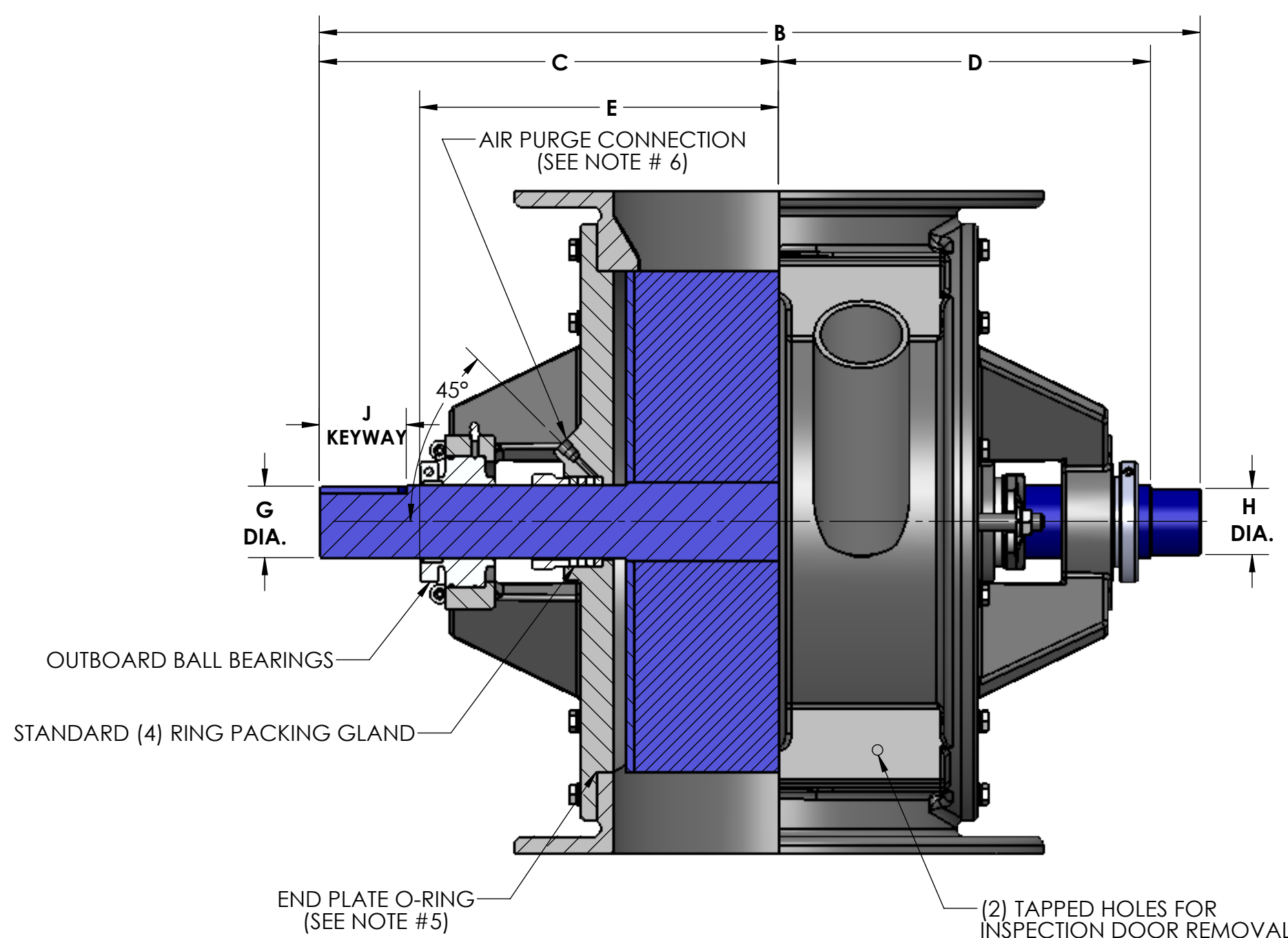
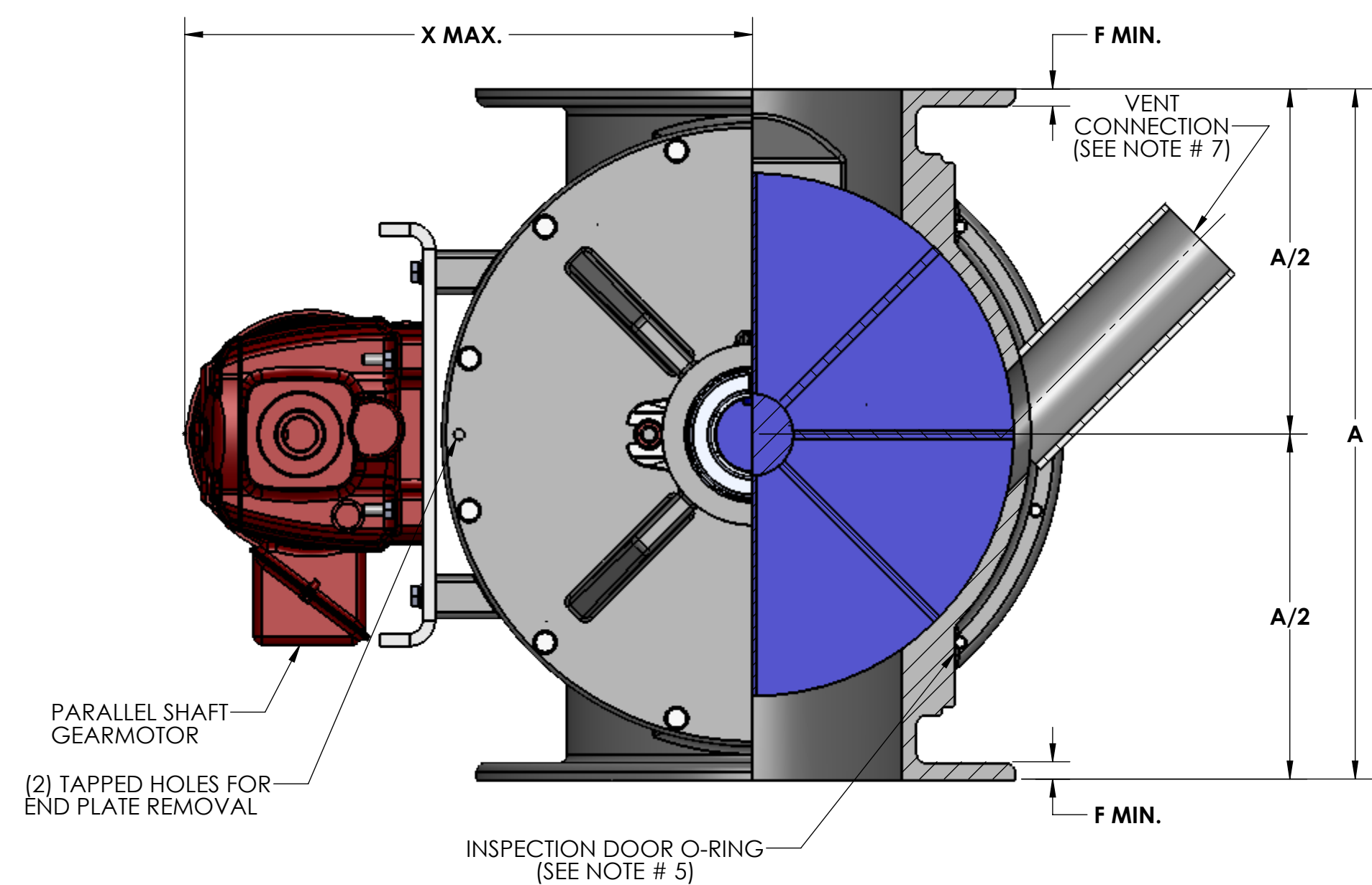
TYPE 'AS' ROTOR

TYPE 'BS' & 'CS' ROTOR



TYPE 'DS' ROTOR

ROTOR SIZES: 4" - 12" 8-VANES
14" - 24" 12-VANES



Size	ROTOR DIA x LG.	ROTOR CAPACITY CU. FT. PER REV.				STD RPM	VENT SIZE	STD HP	A	B	C	D	E	F	G	H	J	K	L	M	N	P	Q	R	S	T	U	V	W	X	Y			WEIGHT
		AS	BS	CS	DS																										STD.	MAX.	C/S	
4	6 x 4	.0428	.0274	.0129	.0399	38	1.25	.50	10.00	19.25	10.31	7.69	7.31	0.31	1.19	1.00	.25 x 12 x 2.62	9.00	7.50	4.00	(8) .75	N/A	7.50	4.00	.62	3.12	N/A	(6) .56	(2) .50-13UNC-2B	13.31	20.38	0.00	205	
5	8 x 5	.105	.0642	.0440	.101	38	1.50	.50	12.00	20.50	10.94	8.31	7.94	0.44	1.44	1.25	.38 x 19 x 2.62	10.00	8.50	5.00	(4) .88	(4) .75-10UNC-2B	8.50	5.00	.62	3.62	N/A	(6) .56	(2) .50-13UNC-2B	14.31	20.38	0.00	260	
6	10 x 6	.208	.124	.0795	.203	32	1.50	.50	14.00	22.38	11.88	9.25	8.88	0.44	1.94	1.75	.50 x 25 x 2.62	11.00	9.50	6.00	(4) .88	(4) .75-10UNC-2B	9.50	6.00	.62	4.12	N/A	(6) .56	(2) .50-13UNC-2B	15.38	20.38	0.00	310	
8	12 x 8	.393	.214	.115	.389	32	2.00	.75	17.00	24.38	12.88	10.25	9.88	0.44	1.94	1.75	.50 x 25 x 2.62	13.50	11.75	8.00	(4) .88	(4) .75-10UNC-2B	11.50	8.00	.62	5.12	2.56	(14) .56	(2) .50-13UNC-2B	16.38	20.38	0.00	385	
10	15 x 10	.815	.507	.354	.811	32	2.50	.75	20.00	26.62	13.88	11.25	10.88	0.44	2.19	2.00	.50 x 25 x 2.62	16.00	14.25	10.00	(8) 1.00	(4) .88-9UNC-2B	14.75	10.00	1.00	6.38	3.19	(14) .56	(2) .50-13UNC-2B	18.00	20.38	0.00	520	
12	17 x 12	1.30	.670	.459	1.295	32	2.50	.75	22.00	29.75	15.81	12.44	12.06	0.56	2.44	2.25	.62 x 31 x 3.38	19.00	17.00	12.00	(8) 1.00	(4) .88-9UNC-2B	16.75	12.00	1.00	7.38	3.69	(14) .56	(2) .50-13UNC-2B	19.00	21.38	0.00	660	
14	19 x 13	1.715	.940	.638	1.705	32	3.00	.75	24.00	30.75	16.31	12.94	12.56	0.56	2.44	2.25	.62 x 31 x 3.38	21.00	18.75	13.00	(8) 1.12	(4) 1.00-8UNC-2B	18.00	13.00	1.00	8.00	4.00	(14) .56	(2) .50-13UNC-2B	19.94	21.38	0.00	885	
16	23 x 15	2.787	1.518	1.011	2.787	30	3.50	1.5	28.00	34.62	18.31	14.81	14.44	0.62	2.94	2.75	.75 x 38 x 3.50	23.50	21.25	15.00	(12) 1.12	(4) 1.00-8UNC-2B	20.00	15.00	1.00	9.00	4.50	(14) .69	(2) .62-11UNC-2B	23.00	25.75	0.00	1,260	
18	25 x 17	3.819	2.062	1.337	3.818	28	3.50	1.5	30.00	36.62	19.31	15.81	15.44	0.62	2.94	2.75	.75 x 38 x 3.50	25.00	22.75	17.00	(12) 1.25	(4) 1.12-7UNC-2B	22.00	17.00	1.00	10.00	5.00	(14) .69	(2) .62-11UNC-2B	24.06	25.75	0.00	1,510	
20	28 x 19	5.397	2.909	1.969	5.415	28	4.00	2.0	36.00	41.38	22.38	17.50	17.12	0.75	3.19	3.25	.75 x 38 x 4.50	27.50	25.00	19.00	(16) 1.25	(4) 1.12-7UNC-2B	25.50	19.00	1.25	11.50	5.75	(14) .81	(2) .75-10UNC-2B	26.62	25.75	0.00	2,200	
22	32 x 21	7.983	4.343	2.947	8.005	26	5.00	2.0	40.00	45.75	24.81	19.44	19.06	0.75	3.69	3.75	.88 x 44 x 5.00	29.75	27.25	21.00	(16) 1.38	(4) 1.25-7UNC-2B	27.50	21.00	1.25	12.50	6.25	(14) .81	(2) .75-10UNC-2B	28.62	25.75	0.00	2,730	
24	34 x 23	10.037	5.434	3.621	10.033	24	5.00	2.0	42.00	47.75	25.81	20.44	20.06	0.75	3.75	3.75	.88 x 44 x 5.00	32.00	29.50	23.00	(16) 1.38	(4) 1.25-7UNC-2B	29.50	23.00	1.25	13.50	6.75	(14) .81	(2) .75-10UNC-2B	29.62	25.75	0.00	3,000	

SPECIFICATIONS ARE SUBJECT TO CHANGE WITHOUT NOTIFICATION

- NOTES:**
1. VALVE HOUSINGS ARE CAST OF IRON, ALUMINUM, STEEL OR STAINLESS STEEL; FABRICATED OF STEEL OR STAINLESS STEEL. ALL ROTORS ARE FABRICATED OF STEEL OR STAINLESS STEEL.
 2. VALVE HOUSINGS ARE AVAILABLE WITH EITHER A SQUARE OR ROUND INLET AND OUTLET. ROUND FLANGES MATCH 150# ANSI DRILLING.
 3. STANDARD HOUSINGS ARE DESIGNED FOR 15 PSI (MAX) INTERNAL & DIFFERENTIAL @ 250 DEGREES F.
 4. INSPECTION DOOR IS OPTIONAL AND WILL BE FURNISHED ONLY WHEN SPECIFIED.
 5. END PLATES AND INSPECTION DOOR O-RINGS ARE OPTIONAL AND WILL BE FURNISHED ONLY WHEN SPECIFIED.
 6. AIR PURGE CONNECTIONS WITH BRASS LANTERN RINGS ARE OPTIONAL AND WILL BE FURNISHED ONLY WHEN SPECIFIED.
 7. VENT WITH SCH 10 PIPE IS OPTIONAL AND WILL BE FURNISHED ONLY WHEN SPECIFIED. VENT CONNECTION WILL CHANGE ROTOR ROTATION TO COUNTER-CLOCKWISE.

GENERAL TOLERANCES		
UNLESS OTHERWISE SPECIFIED THE FOLLOWING SHALL APPLY		
MACHINING - .XX=	.02	.XXX= .005
ANGLE= .50°		
SURFACE ROUGHNESS HEIGHT 63 MICRONS OR LESS		
FABRICATION - UNDER 6"	±.04	6 TO 24"
±.12	24 TO 60"	±.25
OVER 60"		
UNLESS OTHERWISE SPECIFIED DIMENSIONS ARE IN INCHES		

REV. NO.	DESCRIPTION	DATE	BY
REVISIONS			
CUSTOMER			
CUST. NO.			
YOUNG ORDER NO.			
TITLE			
YOUNG INDUSTRIES MODEL 'HC' ROTARY VALVE, SIZE 4" - 24", CLASS 15 WITH PARALLEL SHAFT DRIVE, SHROUDED ROTOR STANDARD DIMENSION SHEET			
YOUNG INDUSTRIES, INC. MUNCY, PENNSYLVANIA 17756 TELEPHONE: 570-546-3165			
DRAWN BY: BMF	DATE DRAWN: 3/21/16		
CHECKED BY:	SCALE: 1:4		
DRAWING NUMBER		REV:	

S-4-6429