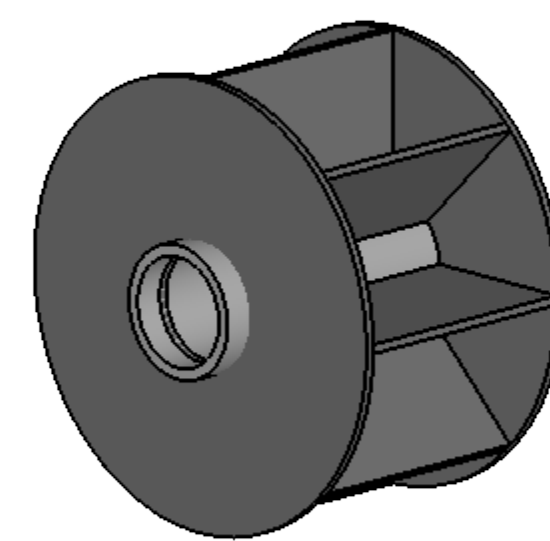
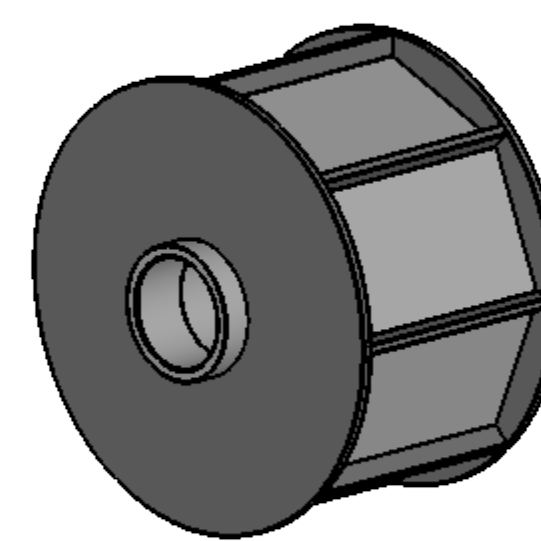


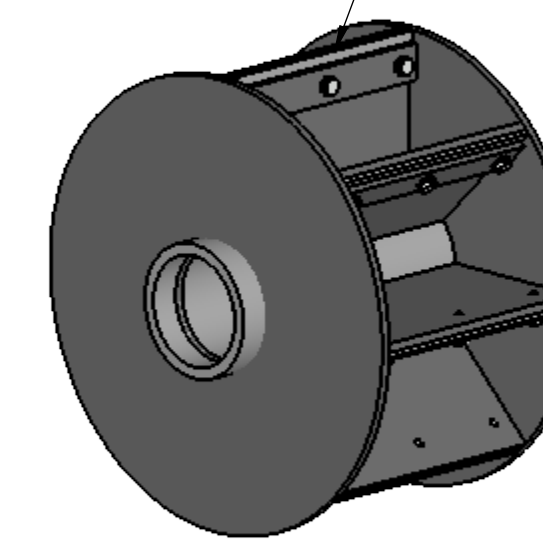
SQUARE FLANGE DETAIL  
BOTTOM VIEW OUTLET  
(SEE NOTE # 2)



TYPE 'AS' ROTOR

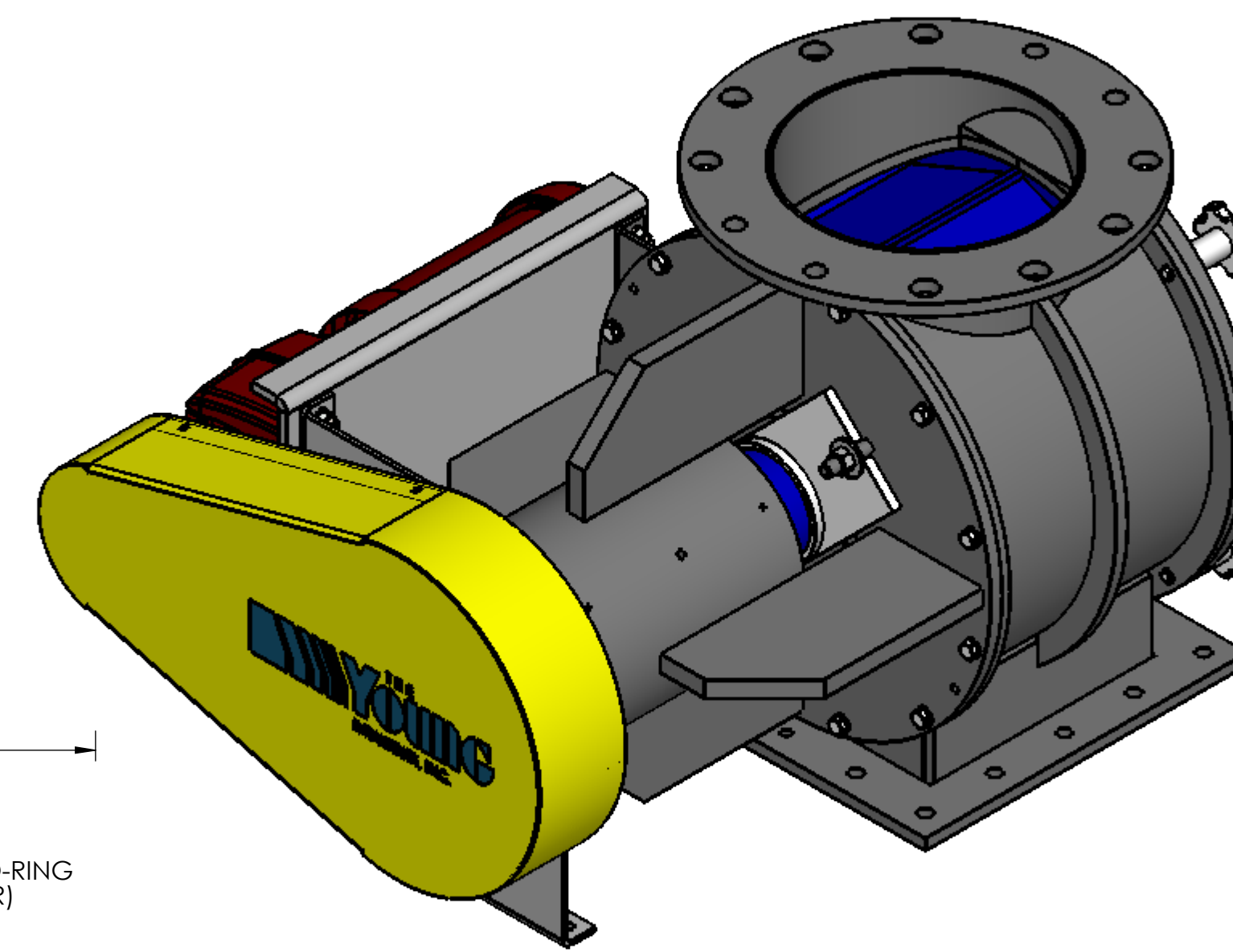
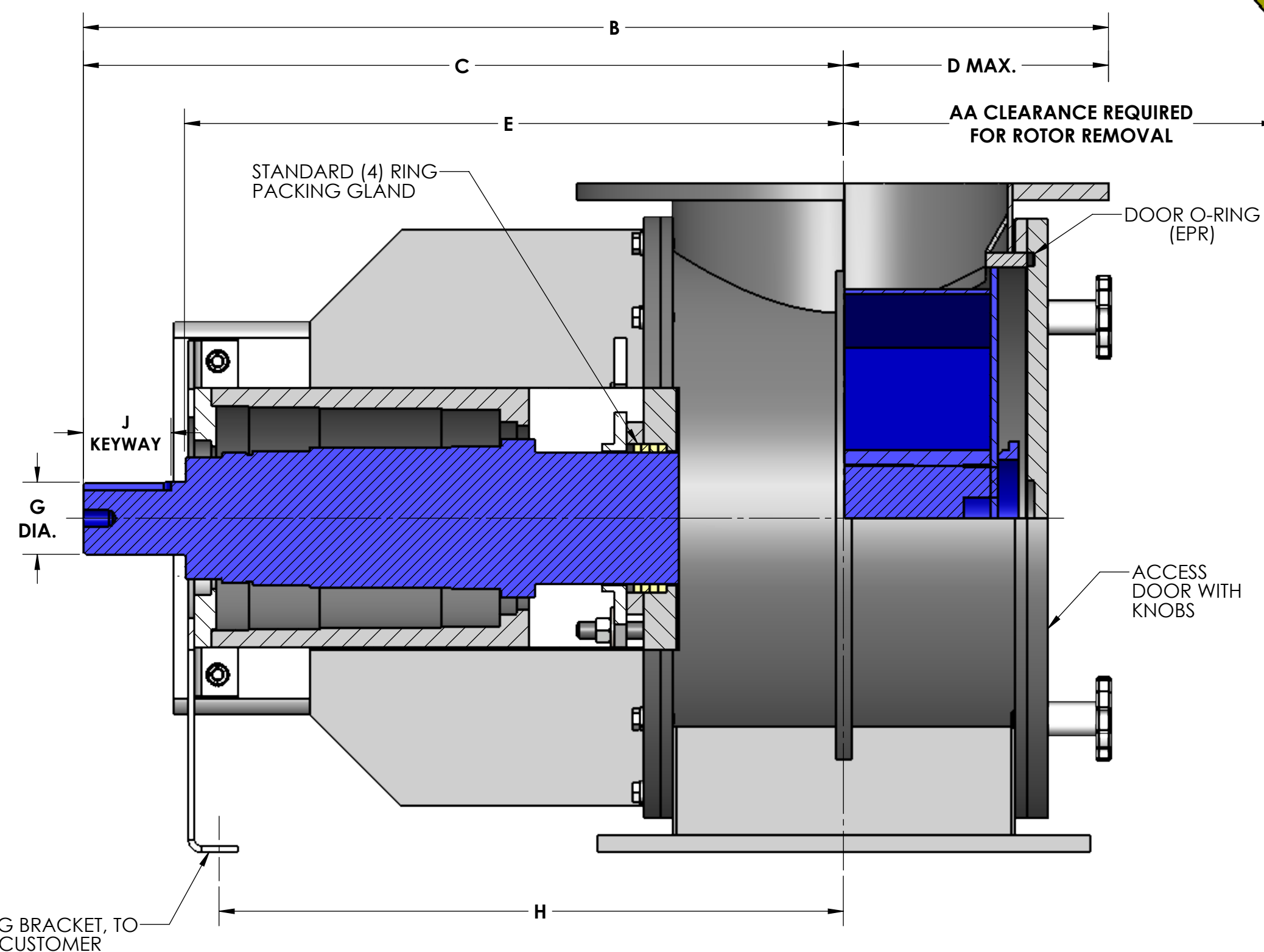
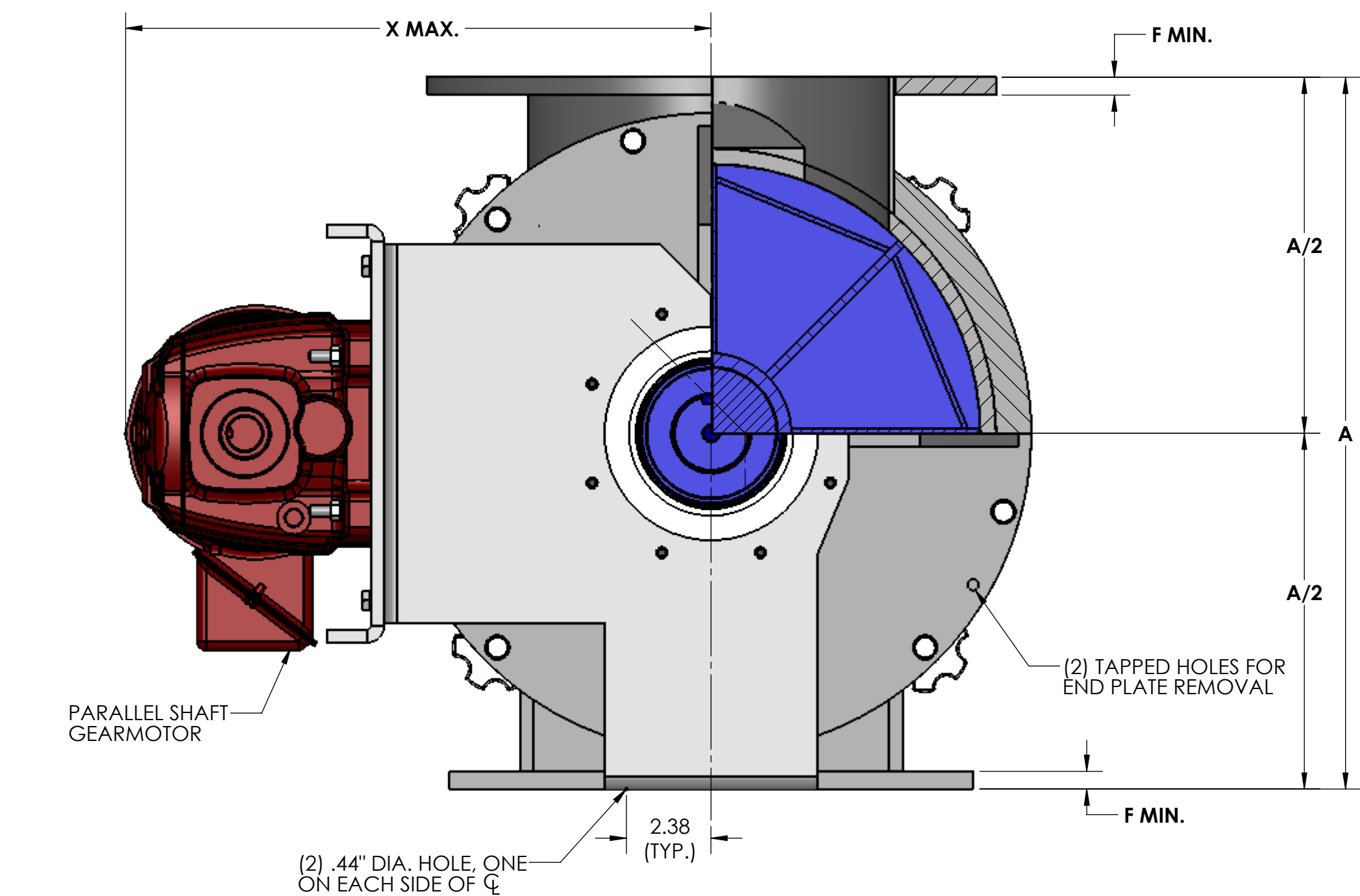


TYPE 'BS' ROTOR



TYPE 'DS' ROTOR

ROTOR SIZES: 4" - 12" - 8 VANES  
14" - 24" - 12 VANES



NOTES:

1. VALVE HOUSINGS ARE CAST OF IRON, ALUMINUM, STEEL OR STAINLESS STEEL; OR FABRICATED OF STEEL OR STAINLESS STEEL. ALL ROTORS ARE FABRICATED OF STEEL OR STAINLESS STEEL.
2. VALVE HOUSINGS ARE AVAILABLE WITH ANY COMBINATION OF SQUARE OR ROUND INLET AND OUTLET. USE ROUND OUTLET WITH ANY FREE FLOWING MATERIAL. ROUND FLANGES MATCH 150# ANSI DRILLING.
3. HOUSINGS ARE DESIGNED FOR 15 PSIG @ 250 DEGREES F.
4. VALVES ARE DESIGNED FOR 15 PSIG DIFFERENTIAL PRESSURE ACROSS THE ROTOR.
5. DOORS ON SIZE 12 & 14 VALVES ARE HINGED.

GENERAL TOLERANCES	
UNLESS OTHERWISE SPECIFIED THE FOLLOWING SHALL APPLY	
MACHINING - .XX = .02 .XXX = .005 ANGLE = .50°	SURFACE ROUGHNESS HEIGHT 63 MICRONS OR LESS
FABRICATION - UNDER 6" 6 TO 24" 24 TO 60" OVER 60"	± .06 ± .12 ± .19 ± .25
UNLESS OTHERWISE SPECIFIED DIMENSIONS ARE IN INCHES	

REV. NO.	DESCRIPTION	DATE	BY
REVISIONS			
CUSTOMER			
CUST. NO.			
YOUNG ORDER NO.			
TITLE			
YOUNG INDUSTRIES MODEL 'QC-HC' ROTARY VALVE, SIZE 4" - 14", CLASS 15 WITH PARALLEL SHAFT DRIVE, SHROUDED ROTOR STANDARD DIMENSION SHEET			
<b>THE YOUNG INDUSTRIES, INC.</b> HUNCY, PENNSYLVANIA 17756 TELEPHONE: 370-546-3165			
DRAWN BY: BMF		DATE DRAWN: 4/11/16	
CHECKED BY:		SCALE: 1:3.5	
DRAWING NUMBER			REV:

SIZE	ROTOR DIA. x LGTH	ROTOR CAP. CU.FT./REV.				STD. RPM	STD. HP	A	B	C	D	E	F	G	H	J	K	L	M	N	P	Q	R	S	T	U	V	W	X	Y	AA	WEIGHT C/S	ROTOR WEIGHT	DOOR WEIGHT
4	6 x 3.50	.0391	.0274	.0129	.0399	38	1/2	10.00	20.81	16.31	4.50	13.06	.31	1.19	12.38	.25 x .12 x 2.62	9.00	7.50	4.00	(8).75	N/A	7.50	4.00	.62	3.12	-	(6).56	(2).50-13UNC-2B	14.94	20.38	12.31	255	20	10
5	8 x 4.50	.0964	.0642	.0440	.101	38	1/2	12.00	20.50	10.94	8.31	7.94	.44	1.44	14.00	.38 x .19 x 2.62	10.00	8.50	5.00	(8).88	(4).75-10UNC-2B	8.50	5.00	.62	3.62	-	(6).56	(2).50-13UNC-2B	15.94	20.38	14.50	300	25	16
6	10 x 5.50	.194	.124	.0795	.203	32	1/2	14.00	22.38	11.88	9.25	8.88	.44	1.94	15.19	.50 x .25 x 2.62	11.00	9.50	6.00	(8).88	(4).75-10UNC-2B	9.50	6.00	.62	4.12	-	(6).56	(2).50-13UNC-2B	17.00	20.38	17.06	325	30	23
8	12 x 7.25	.366	.214	.115	.389	32	3/4	17.00	24.38	12.88	10.25	9.88	.44	1.94	15.75	.50 x .25 x 2.62	13.50	11.75	8.00	(8).88	(4).75-10UNC-2B	11.50	8.00	.62	5.12	2.56	(14).56	(2).50-13UNC-2B	18.00	25.00	20.31	455	40	31
10	15 x 9.25	.762	.507	.154	.811	32	3/4	20.00	26.62	13.88	11.25	10.88	.44	2.19	17.19	.50 x .25 x 2.62	16.00	14.25	10.00	(12) 1.00	(4).88-9UNC-2B	14.75	10.00	1.00	6.38	3.19	(14).56	(2).50-13UNC-2B	19.62	20.38	24.75	585	75	45

SPECIFICATIONS ARE SUBJECT TO CHANGE WITHOUT NOTIFICATION