



# CONVEYOR



Engineered to Increase Productivity  
and Built to Last



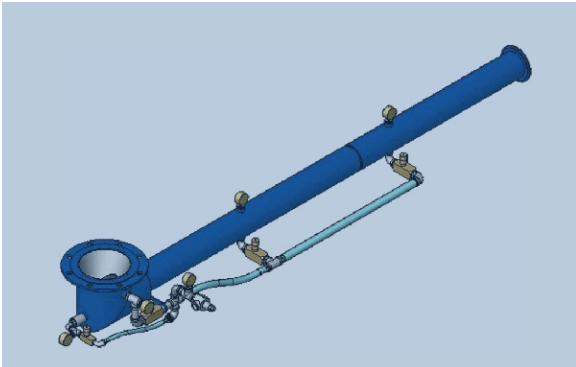
PH: 570-546-3165 FAX: 570-546-1888

E-mail: [mktinfo@younginds.com](mailto:mktinfo@younginds.com)

[www.younginds.com](http://www.younginds.com)

BULLETIN 267-201

## Now you can get trouble free conveying of pigments, clays, talcs, stearates, and other difficult to handle materials



The Young Industries, Inc. patented STINGER® Conveyor is the best solution for transferring difficult-to-handle materials. It provides reliable conveying and metering of fine particle size materials. The STINGER® works best on products that are cohesive and consist of particle size 100 mesh and below. such as pigments, talcs, stearates and other hard-to-handle products.

### No moving parts in the conveying zone

The STINGER® conveyor consists of a solid metal outer tube with the inlet transition, interior tube and discharge section lined with TransFlow® aeration media. The conveyor has no moving parts in the conveying zone and operates using your plant compressed air.

Trans-Flow® aeration media is porous 316 stainless steel with an ultra smooth finished contact surface manufactured for precise control of permeability and strength. This media produces an evenly distributed layer of air inside the tube that floats the bulk material above the media. This bed of air makes it easy for the material to slide.

The STINGER® conveyor's thru-put capacity is control by adjusting the input air or gas volume and pressure. For most applications, the unit can operate with a pressure of 3 to 5 PSIG. The maximum recommended pressure is 15 psig. The final operating pressure and air or gas consumption is dependent on the

characteristics of the bulk materials being handled.

### Low headroom requirement

The STINGER® Conveyor has replaced screw conveyors and screw feeders. Because of its design, it fits in existing areas having a restricted headroom. The unit is easy to setup and operate.

### Materials can be conveyed vertically as well as horizontally and even around corners

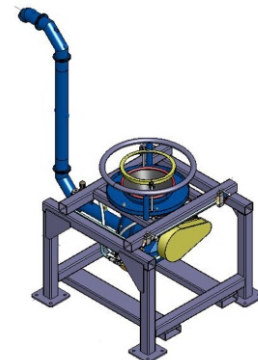
The STINGER® Conveyors can convey distances in excess of 100 feet horizontally, 30 vertically and through several elbows. Standard conveyor sizes are 1.5", 2", 3" 4" 5" and 6" diameter with thru-put capacities ranging from 32 to 60,000 lbs per hour.

STINGER® Conveyors are used for application where conveying has been impossible by other methods and performs where other methods have failed. STINGER® Conveyors have been used in the chemical, paint and coating, plastic, food, bakery and pharmaceutical industries.

### Free application engineering assistance

Young Industries engineers can work with you to design a conveyor to solve your bulk materials handling problem. As simple as the STINGER® is, any additional knowledge, experience and planning we can provide will make your conveyor more reliable and efficient. For free application assistance, contact us by telephone at 570-546-3165 or by email [mktinfo@younginds.com](mailto:mktinfo@younginds.com)

STINGER®  
Conveyors can transfer difficult-to handle material horizontally 100 feet as well as 30 feet vertically and through several elbows.





STINGER® Conveyor with elbow and flanged discharge

STINGER® Model Number	Conveying Capacity Range
STR 4 x1.5	32 to 3200 lbs/hr (16 to 1600 kg/hr)
STR 4 x 2	60 to 6000 lbs/hr (27 to 2700 kg/hr)
STR 6 x 3	150 to 15000 lbs/hr (68 to 6800 kg/hr)
STR 6 x 4	250 to 25000 lbs/hr (112 to 11200 kg/hr)
STR 8 x 5	400 to 40000 lbs/hr (181 to 18181 kg/hr)
STR 8 x 6	600 to 60000 lbs/hr (273 to 27300 kg/hr)

Custom sizes and designs available  
Capacity dependent on material handled



TiO<sub>2</sub> material discharging from a STINGER® conveyor into a dispersion mixer



Multiple outlet feed STINGER® Conveyor for unloading bulk bags of pigment products



### Batch Weighing System

When you need to batch weigh difficult-to-handle products, the STINGER® DōS-WEIGH™ Batching System is the right solution.

The DōS-Weigh Feeder™ System is a custom designed automated weigh batching system featuring a combination of Trans-Flow® components. The advantages of this system is;

- Precise weighing of hard-to-handle materials
- No moving parts in the product zone
- Discharge lengths 48" and longer
- High feed rate and turn down ratio
- Dust tight



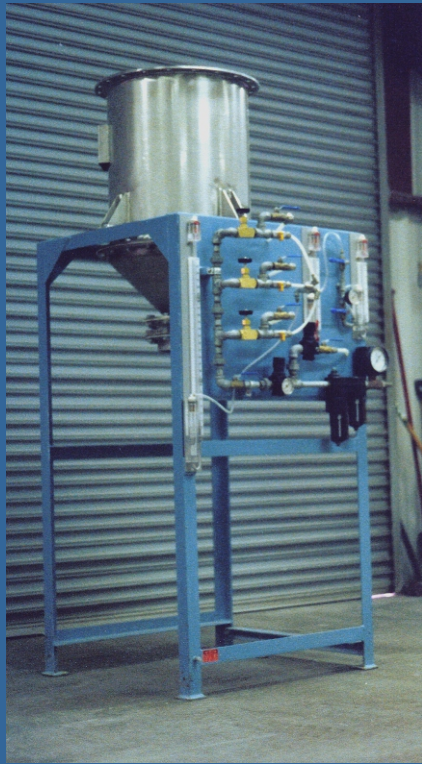
### Direct-for-Bulk Bag Unloader

Quick and reliable bulk bag unloading with a Direct-From-Bulk Bag (DFB) Unloader and STINGER® conveyor. The patented DFB with STINGER® dependably unloads difficult-to handle powders like pigments, clays, stearates, etc.

DFB Unloader reduces your operating cost by:

- Lower labor cost because you are only handling the bag once
- Portable to let you unload into multiple use points
- Reduces the loss of product
- Precise weighing of powders available
- Repeatable discharge feed rate for improved finished product.





## **Fine tune your process with product testing**

Complete product testing facilities are available at our Muncy plant. Tests are conducted on your material by our trained Bulk Materials Handling Engineers and Technicians. You are welcome to view the demonstration of equipment at work on your own product.

Other Young Industries bulk materials handling equipment is available to analyze your pneumatic conveying, mixing, blending, size reduction, size classification, sifting and air quality problems.

For more information, call 570-546-3165 or fax 570-546-1888 or e-mail [mktinfo@younginds.com](mailto:mktinfo@younginds.com)

## **SEEING IS BELIEVING**

Mobil STINGER® Test System Now Available for a Visit to Your Plant

### **No Moving Parts to Move Those Nasty Powders! Who Ever Heard of Such a Thing?**

Mobile demonstration trailers are located throughout the United States making it easy to provide first hand knowledge about how the STINGER® handles your materials. A unit can be quickly set up in any convenient plant location (Even in your parking lot). This will enable your engineers, operators, maintenance staff, production managers, and other key personnel to see the STINGER® handle your powder products; providing immediate answers.

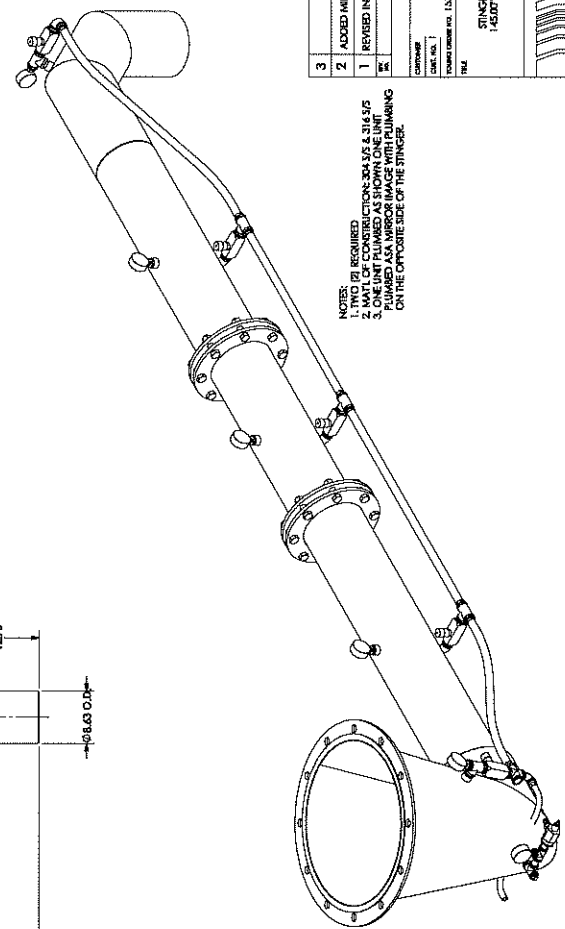
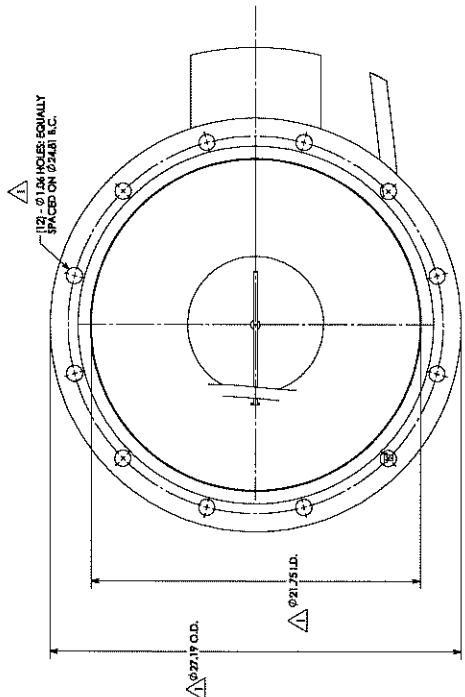
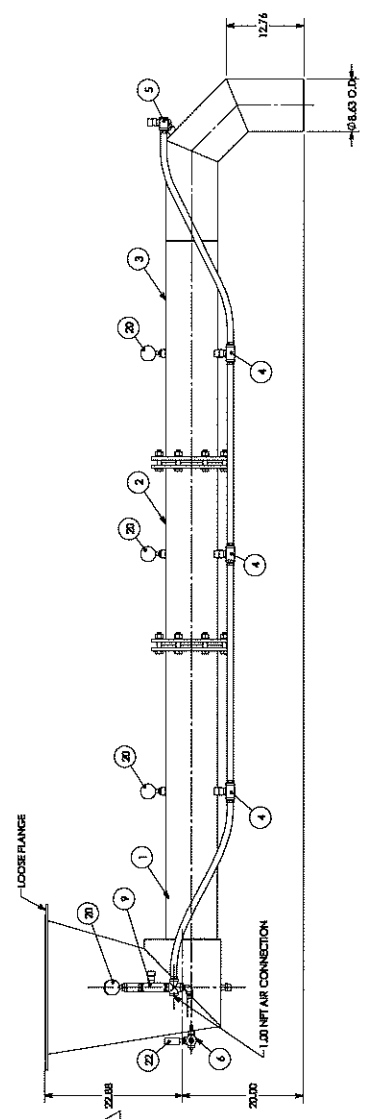
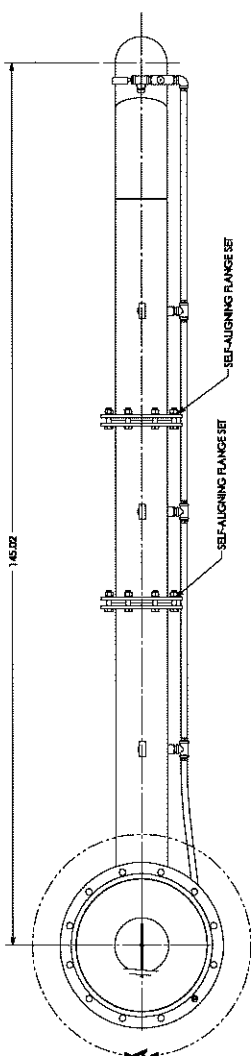


Demonstrations are free. The equipment connects to your plant's 1/4" compressed air supply or can operate from self contained compressor.

Give us a call at 800-546-3165 or email us at [mktinfo@younginds.com](mailto:mktinfo@younginds.com) to contact our Area Representative to schedule a visit.

ITEM NO. QTY. PART NO.

- 1 Slitex bell, size 124, modular - workitem (13266)
- 2 Slitex section, 6in. A, 3/16in. modular (13266)
- 3 Slitex discharge elbow, size A, modular - workitem (13266)
- 4 Slitex flow valve assembly - straight section (13266)
- 5 Slitex flow valve assembly - elbow and section (13266)
- 6 Slitex nozzle assembly (13266)
- 7 Slitex valve, size 7/8, Ringco, 180 Micro, TWF series, brass
- 8 Slitex, 3/16in. 997-20 W/P, 60A, 2000psi
- 9 Slitex, 3/16in. 997-20 W/P, 60A, 2000psi
- 10 Slitex, 3/16in. 997-20 W/P, 60A, 2000psi
- 11 Slitex, 3/16in. 997-20 W/P, 60A, 2000psi
- 12 Slitex, 3/16in. 997-20 W/P, 60A, 2000psi
- 13 Slitex, 3/16in. 997-20 W/P, 60A, 2000psi
- 14 Slitex, 3/16in. 997-20 W/P, 60A, 2000psi
- 15 Slitex, 3/16in. 997-20 W/P, 60A, 2000psi
- 16 Slitex, 3/16in. 997-20 W/P, 60A, 2000psi
- 17 Slitex, 3/16in. 997-20 W/P, 60A, 2000psi
- 18 Slitex, 3/16in. 997-20 W/P, 60A, 2000psi
- 19 Slitex, 3/16in. 997-20 W/P, 60A, 2000psi
- 20 Slitex, 3/16in. 997-20 W/P, 60A, 2000psi
- 21 Slitex, 3/16in. 997-20 W/P, 60A, 2000psi
- 22 Slitex, 3/16in. 997-20 W/P, 60A, 2000psi



NOTES:  
 1. PART #S REQUIRED  
 2. WALL OF CONSTRUCTION: 304 SS & 316 SS  
 3. ONE UNIT FLANGED AS SHOWN ONE UNIT FLANGED AS SHOWN WITH FLANGING ON THE OPPOSITE SIDE OF THE STINGER.

3	ADDED MIRROR IMAGE NOTE	ISSUE/REVISED
2	REVERSED INLET	ISSUE/REVISED
1	REVERSED INLET	ISSUE/REVISED
0	ISSUE/REVISED	ISSUE/REVISED

REVISIONS

DATE: 01/11/02

BY: AEB

SCALE: 1:10

DATE: 01/11/02

PROJECT: D-20211-01.02

ASSEMBLY:  
 STINGER AND NOZZLE ASSEMBLY 12 X 6,  
 1400T LONG, MODULAR DESIGN

THE  
**WYOMING**  
 INDUSTRIES, INC.  
 1000 W. 10TH AVENUE, SUITE 100  
 DENVER, COLORADO 80202

Drawn by: AEB

Checked by: AEB

DATE: 01/11/02

DETAIL A  
 SCALE 1:4